



AIK SIDE

August 2021



WHO WE ARE

InsideAKL is a monthly, educational publication by the Fraternity of Alpha Kappa Lambda, for undergraduates and alumni. Brothers and friends are encouraged to submit news, articles and photographs of chapter events, philanthropy and service projects, as well as other notable achievements. Correspondence can be submitted using the link below.

[Online Event/Article Submission Form](#)

Creative Director/Editor

William "Trey" Nunnally III, Beta Nu at VCU

Contributing Writers

Guy Davis, Beta Nu at VCU
Evan Ridenour, Gamma Tau at IU
Jeremy Slivinski, Beta Nu at VCU
Jeff Szumanski, Gamma Iota at EMU

Contact Us

(317) 564-8003
354 Gradle Drive
Carmel, IN 46032
info@akl.org
www.AKL.org

"Men of Character Committed to Making a Difference."

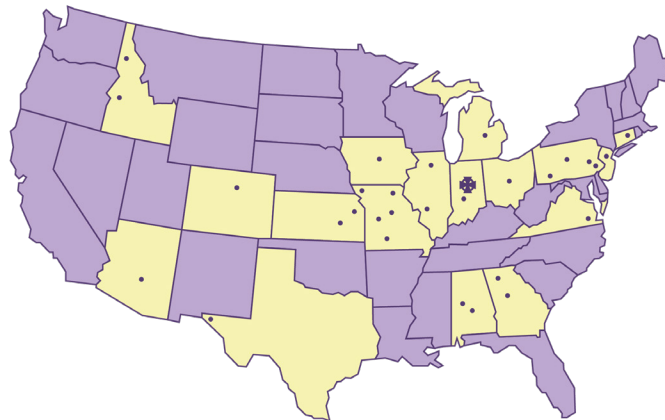
Mission Statement

Develop brothers who, guided by the Five Ideals, share a lifelong commitment to AKL and are dedicated to assuming leadership roles in meeting the challenges of life.

Vision Statement

To be the premier collegiate experience leading to lifelong brotherhood.

Alpha Kappa Lambda National Statistics



26,000+

Living Alumni Worldwide

900+

Undergraduate Members

29

Active Chapters

Front Cover

Gamma Tau chapter at Indiana University welcomes back brothers as well as IU faculty, staff, and students to campus!



www.facebook.com/AKLFraternity



[@AKLFraternity](https://twitter.com/AKLFraternity)



[@AKLFraternity](https://www.instagram.com/AKLFraternity)

From the Desk of the Executive Director

Dear Brothers,

Are we back to normal yet? Unfortunately the answer is no. The pandemic continues and it still requires vigilance in everything we do. The promising news is that we can do a lot of things we couldn't do 6, 12, or 18 months ago. For undergraduates that means doing things face to face again on campus. Obviously recruitment is the first priority this fall but brotherhood activities, alumni activities, and the many other things we "normally" do have returned. As alumni we can start thinking about Homecoming, catching up with Brothers in town and other things that we may have not been able to do the past year.

What we have been through has provided me a greater appreciation of what we have and what the value of Fraternity is. I hope you feel the same way. I look forward to the great things our undergraduates do this fall and for us as a Fraternity to get back to normal very soon.



Fraternally,

A handwritten signature in blue ink that reads "J. D. Slivinski".

Jeremy Slivinski,
Fraternity of Alpha Kappa Lambda, Executive Director

REMEMBER OUR RESPONSIBILITIES

Living the Creed of AKL

What it Means to be a “Man of Character”

When you recite and think critically about the Creed of Alpha Kappa Lambda, consider the meaning of each individual statement and how together, they make up the essence of what it means to join AKL. The Creed is the most public written form of Ritual and statement of our beliefs. As members of AKL, these words become more than merely a statement of beliefs but a way of life. The meaning of these words will inevitably change as you continue with your journey. This change is evidence of your growth and continued development into a “Man of Character Committed to Making a Difference.”

I believe in the Five Ideals of Alpha Kappa Lambda fraternity and subscribe to an emphasis on Judeo-Christian Principles, Leadership, Scholarship, Loyalty, and Self-Support.

I believe in brotherhood as friendship of the highest calling.

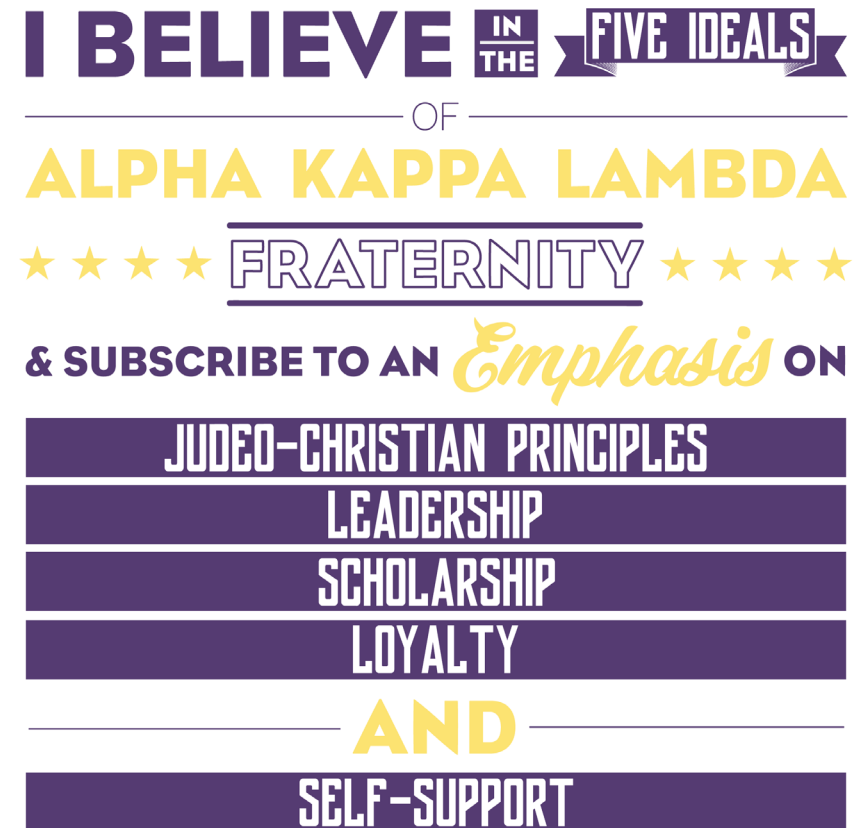
I accept Membership in Alpha Kappa Lambda as affiliation that is binding for life.

I pledge myself to treat others as I would have them treat me.

I shall respect the opinion of others.

I shall commit myself to a style of membership in Alpha Kappa Lambda that is an educationally and socially maturing process. The goal of this process is achieving a wholeness of manhood that is prepared to assume leadership responsibilities in fulfilling the obligations of life.

Let's break it down and discuss the AKL Creed one line at a time. A recording of this article can be found in the AKL Online Education Resource Library.



The Creed of Alpha Kappa Lambda begins by listing our fraternity's Five Ideals. We call them "ideals" because no one is expected to attain them, instead they are ideals by which all AKL members should strive towards. No one person is expected to reach the pinnacle of perfection, but all are expected to try.

The Five Ideals are designed to help us improve as men. The journey you

have embarked on to strive for these Ideals contributes to your holistic development as an individual, placing emphasis on your personal and intellectual growth. As you improve and strive after the Ideals, so will the Fraternity improve.

AKL's first Ideal, Judeo-Christian Principles, goes beyond a strictly theological background, seeking to
Continued on next page...

Living the Creed of AKL: Continued

take the best from all backgrounds. Each chapter will develop men of character who profess a moral code through rehearsal, performance, and understanding of AKL's Ritual and national philanthropy, "These Hands Don't Hurt."

Leadership, AKL's second Ideal, extends beyond holding an office in your chapter. Each member should lead by example when working with others and getting involved in extracurriculars. The focus here is to discover what opportunities are available to represent AKL on campus.

Scholarship, AKL's third Ideal, is more than just "getting good grades," by striving to excel in all scholarly pursuits to enhance one's social and cultural knowledge. Members will focus on taking what is learned in the classroom and applying it to the real world and chapter operations.

Loyalty, AKL's fourth Ideal, represents devotion to one's fraternity and service beyond graduation. The chapter will

strengthen the ties of brotherhood through Founders' Day celebrations, alumni engagement, discussions on alumni and undergraduate membership, all while seeking out other men for membership.

The fifth of AKL's Five Ideals, Self Support, allows each member to contribute his talents and interests to the group. While the fraternity unites members as a whole to develop a support system, individuals are expected to meet their own obligations through professional development and future planning.

After discussing what the Five Ideals represent, you may wonder how they apply to you. Much like the entire Creed, the way in which you view the Five Ideals will change over time. Ongoing consideration, application, and reflection of the Five Ideals is a foundational component to ongoing personal development.

The AKL Creed continues by comparing brotherhood to friendship.

I BELIEVE IN

Brotherhood

— AS —

FRIENDSHIP

★ ★ ★ ★ OF THE ★ ★ ★ ★

HIGHEST CALLING

Not just any friendship, but "friendship of the highest calling." Much like the Five Ideals we previously discussed, brotherhood is something bigger than one person. Brotherhood is more than just the friendships you develop with classmates or even chapter brothers.

Brotherhood transcends location and time. Brotherhood in Alpha Kappa Lambda has existed for over a century now. Brotherhood is finding a home

while away at college. Brotherhood is looking out for your local chapter brothers and helping them when they're in need. Brotherhood is meeting brothers from other chapters at events like Conclave. Brotherhood is networking and an instant bond. Brotherhood is growing older and sharing the good and bad experiences of life.

Continued on next page...

I ACCEPT

MEMBERSHIP IN

ALPHA KAPPA LAMBDA

AS

Affiliation

THAT IS BINDING FOR LIFE

"From the outside looking in, you can't understand it. From the inside looking out, you can't explain it." It is our shared experience as brothers of AKL, from the national fraternity to individual stories, that create brotherhood. It's different for every person.

Continuing from the last line of "brotherhood as friendship of the highest calling," this next portion of the AKL Creed states that this

brotherhood or friendship is not for a limited time but for life. Our undergraduate membership in AKL is only about four years. The majority of our membership is as alumni.

As undergraduate members, we may find ourselves most active in the fraternity. We may be living with or close by to other brothers. University events, including Greek Week and Homecoming, keep us engaged on

campus regularly. Chapter meetings, philanthropies, social events, and more have us meeting face to face often, collaborating and making memories together daily.

As alumni members, our daily schedules look different without these activities, but we still remain "Men of Character Committed to Making a Difference." We still hold ourselves to the Five Ideals. We still have the memories we created as undergraduate members. But as alumni we get to return to our chapter's and share these memories with younger members. We get to give back to our chapter by advising or volunteering. If life takes us to a new location, we can assist other chapters in the same ways.

While we may not see our brothers everyday, our friendships can continue to grow. As we get older we reconnect with our brothers as alumni at events like Homecoming and Conclave. We can network and build careers with our brothers. We share the triumphs of life

as we watch our brothers get married, have kids, and reach their goals. And we're there for our brothers through the hardships of life as well. By joining AKL, we have all made commitments to ourselves, our brothers, and to the national fraternity that builds a lifelong support system.

The creed continues on discussing how we pledge ourselves to treat others as we would have them treat ourselves.

What does it mean to be "Men of Character Committed to Making a Difference?" Our actions towards our brothers and others outside of the fraternity display who we are, not just individually, but as a brotherhood together.

Some may refer to this line as the golden rule. Others may see it as common courtesy. Regardless of what we may call it, being a "Man of Character" is a full time commitment without exceptions.

Continued on next page...

I PLEDGE MYSELF TO TREAT OTHERS AS I WOULD HAVE THEM TREAT ME

★ ★ ★ ★ ★ ★ ★ ★ ★ ★

I SHALL *Respect* THE OPINION OF OTHERS

Kindness is easy to share with others and can make a big difference in how others perceive us and themselves. We should all give respect and in return receive respect.

This next line connects directly with the previous line “to treat others as I would have them treat me. Regardless if we have a disagreement with a brother at a chapter meeting, or if we have opposing viewpoints with a classmate

or colleague, everyone deserves the same respect.

During chapter meetings we can show respect by following Roberts’ Rules of Order and maintaining a professional discussion, collaboration, and compromise. The same actions should apply in the classroom when learning and discussing with others outside the fraternity or when attending events on campus. These learned gentlemen

behaviors will follow and benefit you in the professional world as well.

In addition to in person interactions, we all need to be careful what we put on social media. While we are all given the right to share our thoughts and opinions, we all need to remember that there are real people on the other end of technology.

Our Creed concludes with statements regarding how membership in the fraternity is an educationally and socially maturing process which prepares us for life.

What do we have to gain from membership in Alpha Kappa Lambda? We have our Five Ideals to strive for and uphold ourselves and our brothers by. We have a support system of our closest friends and family that is with us for life. We learn to show ourselves and others the same respect we all deserve. In and out of the classroom, from undergraduate membership to alumni membership, we will mature together as “Men of

Character Committed to Making a Difference.”

What does it mean to “achieve a wholeness of manhood?” When will we know we have reached this wholeness? Can we be certain we will ever reach it? Life is uncertain, the best we can do is prepare by always working to be the best man we can be. College is a transformative time, it’s best to learn these skills when you’re with your brothers so you can apply them on your own.

What are the obligations of life? Look back to the beginning of our Creed, Judeo Christian Principles, Leadership, Scholarship, Loyalty, and Self Support. Alethia Kai Logos, The truth and the word.

How we choose to grow and develop is determined by our actions. As Alpha Kappa Lambda men we have many morals, Ideals, and affiliations to guide us on this journey. Our individual and

Continued on next page...

I SHALL COMMIT MYSELF

TO A

Style

OF MEMBERSHIP IN

ALPHA KAPPA LAMBDA

THAT IS AN

**EDUCATIONALLY & SOCIALLY
MATURING PROCESS**



collective experiences may engage with these obligations of life differently, but when it comes down to it we always have our brotherhood and fraternity to return to.

Discussions about the Creed of Alpha Kappa Lambda can and should be part of our daily dialogue. I encourage our undergraduate members to discuss the Creed and what it means to you, both at chapter meetings and casually

when just hanging out. Use this video and the provided discussion questions or develop your own prompts to get the conversation started.

For our alumni members, I encourage you all to revisit the Creed. For many of us, we aren't reciting the Creed weekly at chapter meetings. How have your experiences after college influenced how you view the Creed of AKL now? Does a certain part have

THE GOAL OF THIS PROCESS

IS

Achieving

A WHOLENESS OF MANHOOD



— THAT IS PREPARED TO ASSUME —

LEADERSHIP RESPONSIBILITIES

IN FULFILLING THE

OBLIGATIONS OF LIFE

more relevance to you now than it did as an undergraduate member? I also encourage our alumni to pick up the phone and call a brother, not just to discuss the Creed, but to catch up and reconnect. Take this new perspective with you when you recite the Creed and engage other brothers in discussions surrounding its meaning from formation to present day.



(Top Right) Psi chapter at Iowa State University participated in a tabling event on campus to meet other students and potential new members.

Sigma Chapter at the University of Central Missouri participated in their university's Student Involvement Fair (Top Left) and Info Nights. (Bottom Left)

(Bottom Right) Xi chapter brothers volunteer to assist with Freshman Move-In at Truman State University.



Recruitment Summer Camp

Recruitment is the Lifeblood of the Fraternity

As we close out summer in preparation

for a new school year, let us not forget the lessons that we have learned from this past year. We've learned how to navigate a world that doesn't mind changing day-by-day. We've learned that we don't need to be in person to be personable. More than anything, we've learned how to be resilient in the face of adversity.

The Fraternity has an obligation to our campuses this semester. There are going to be a record number of students at multiple campuses looking to be involved. Some will seek Greek Life out, others will not, but they know that they want something more out of their college experience. It is our responsibility to ourselves as chapters and the Greek community as a whole to explore both populations.

Recruitment Summer Camp was started as an initiative to help chapters build plans for the fall. Over the course of the summer, Evan Ridenour and National Headquarters staff facilitated monthly discussions, brainstorm, and

recruitment skills training sessions. Each session was open to all members of the fraternity, with heavy emphasis on Recruitment Chairs attending.

Session One

Goal Setting & Brainstorming

Getting started is the first step in any plan! In June, Recruitment Chairs and chapter representatives began discussing their recruitment plans and calendars. Takeaways included:

- In order to plan effectively, you must be goal oriented.
- Use the SMART goals model to set your goals!
- Conduct a SWOT analysis to identify areas of strength and areas that need improvement.

Session Two

Organization & Refinement

Between Session One and Two, Recruitment Chairs worked to update and develop their recruitment plans. In July, We came together again to discuss how to organize and refine our



planning. Takeaways included:

- Everyone in the chapter needs to be on the same page.
- Utilize a calendar to plan specifics about recruitment events.
- It's important to work past "formal recruitment" and have a plan to recruit for the whole semester, not just a week or two.
- Any event can be made into a recruitment event! All it takes is some members and some guys who are interested in becoming members.

Session Three

Presentation & Execution

From Session Two to Session Three, Recruitment Chairs finalized their recruitment plans. Our final meeting in August allowed for final presentation of recruitment plans before executing them on campus. Takeaways included:

- Recruitment needs to be as open a process as possible.
- Identify what you want your bidding process to look like.
- Follow up with bids that are out consistently.

There was no way to predict the curveballs that last year threw at us and there is no way to know what the future is to hold. The best thing to do now is to recruit hard and demonstrate what it means to be "Men of Character Committed to Making a Difference!"

This upcoming semester promises to be a crucial one, as we see numbers of interested undergraduate students higher than average. The time to take advantage of this influx is now. This year, we need all the support we can get, from our newer members to seasoned alumni.

(Top and Bottom Right) Gamma Omicron chapter co-hosted an outdoor “Farewell to Summer” Luau with the women of Alpha Sigma Tau and Alpha Omicron Pi for all students at Dalton State College.

(Top and Bottom Left) Gamma Tau brothers at Indiana University welcome each other and fellow students back to campus in Bloomington!



Newfields, New Beginnings

Tony Viviano, Beta Tau SIUE '10

Having recently graduated with his Master of Arts in Philanthropic Studies from Indiana University and starting a new role as Annual Giving Officer for Newfields, Tony Viviano caught up with InsideAKL to share with us his graduate education experience, professional career, and what it means to give back to the fraternity as an alumni member.

Tony, tell us a little bit about yourself.

"I grew up in St. Jacob, Illinois and went to college at Southern Illinois University Edwardsville SIUE where I joined the AKL Beta Tau chapter. I went through rush twice, once in the fall for another fraternity and then again in the spring for AKL. I was a member of the chapter up until I transferred and finished my Bachelor's of Business Administration at McKendree University in Lebanon, Illinois."

Why did you decide to rush and how did you get involved with Beta Tau chapter at SIUE?

"I always knew I wanted to join a fraternity. I might be dating myself, but the TV show 'Greek' was on air at the time. It was a great marketing tool for Greek life. What interested me about AKL was getting to meet the guys and the array of brothers. It was the friendship piece for me that was enticing. Especially at that time, I wanted to have the traditional college experience even when I was living at home. That's what Greek life provided."

What was your undergraduate experience like?

"Most of my memories are fun. The fraternity at that point was in a state of transition. A lot of the older guys who kept things going were graduating, and the newer guys were transitioning to lead the fraternity. We were doing a lot of cool things."

"I was President of my pledge class and was involved in the chapter's philanthropy. Of course I helped out with These Hands Don't Hurt. I



also had a relationship with the Red Cross and was able to introduce the fraternity to them. Together we set up philanthropies including community wide blood drives that also worked in tandem with the university."

Were you involved on campus or in the community besides AKL?

"Yes, I continued to volunteer and partner with the Red Cross to plan community wide blood drives. At McKendree, I was Senior Class Gift President. The year before I was chair, there were around 90 monetary gifts from graduates to the university."

"The year I was chair and graduated we raised around 200 senior class gifts. While I was on staff at McKendree as the Coordinator of Annual Giving and Advancement Services, we maintained that same level of performance. That same year I graduated, I was a Senator in Student Government."



What caught your interest about philanthropy?

"I liked the aspect of helping each other and getting back to the core of our Five Ideals. Judeo-Christian Principles and looking out for each other. Leadership and making an impact. Loyalty to the community and campus."

"After graduation, my interest in philanthropy led me to Purdue University where I served as the Assistant Director of Annual Giving. During my time at Purdue, there was a call out for volunteers to be staff advisors to Greek life, and I began mentoring the Phi Kappa Psi chapter. It was fun for me to work with them. I got to learn about their guys and what it is like to be on a college campus that had large fraternity houses. We didn't have 'traditional' fraternity houses at SIUE."

Continued on next page...

Tony Viviano: Continued

"After my time at Purdue, I began working for Lambda Chi Alpha Headquarters here in Carmel, Indiana. I learned about the opportunity from a networking connection I met at a conference back in 2016. He was the Senior Director of Development at Lambda Chi and he also worked at Purdue prior to me. We both lived in Indiana and caught up after two years of not seeing each other. Through conversation, he convinced me to apply for the position and I began working as Lambda Chi's Director of Annual Giving and Stewardship."

What was it like working with other fraternity organizations?

"I think having and making friends across fraternity and organization lines is a great thing. We are always so focused on our chapter and our guys, with very little cross Greek collaboration."

"Working and volunteering with Phi Psi and Lambda Chi built important relationships. You never know what

connections you can reach out to or where they might lead you next. It's vital to make those networking friendships."

"I learned that every fraternity and chapter is facing the same issues as AKL. Every campus with Greek life has the same challenges. We can get siloed into what is happening with AKL that we don't see how it is magnified on every campus. Just because it looks like they are having more fun, especially if there are risks, it is important to make safe risk management choices. The mentality of 'do now, ask forgiveness later' doesn't exist anymore. If it doesn't sound like a good idea it probably isn't a good idea."

Recently you graduated with your Master of Arts in Philanthropic Studies from Indiana University, congratulations! Tell us more about your experience.

"I landed on the program because of my history working in philanthropy. The Indiana University Lilly Family School of Philanthropy is the largest and only



A look back at the 2019 Clark-Thompson Presidents' Academy & Officers' Institute where Tony (third from left) joined other AKL alumni and fraternity friends as a facilitator during Recruitment Bootcamp.

formalized school of philanthropy in the world. It was a great opportunity to learn about the study of philanthropy, the history of philanthropy, and the laws surrounding philanthropy."

"Prior to starting my graduate program, I took a course at the Fundraising School, a part of the IU Lilly Family School of Philanthropy. The course was a standalone professional development for practitioners that did not want to get a full formalized philanthropy education. It was an intense one week course that culminated with us receiving a certificate of completion."

"During the course I met the faculty and fell in love with the program. It was not

an easy process working a full time job and going to school part time. Losing my job during the pandemic helped me focus on my grades. I picked up a graduate assistant position, it still wasn't easy but if you're willing to put in the work it's very rewarding."

"If you are thinking about grad school, look into it and do it. Hard work and dedication pays off. However, do not go to grad school for the sake of going to grad school. If it is not going to help you in your career, then do not go. There are many professional certification options, it is a personal choice on what you want for the best path forward."

Continued on next page...

Tony Viviano: Continued

You also recently started a new job at Newfields as an Annual Giving Officer, congratulations again! Tell us more about Newfields, your role, and what you hope to give and gain from your new professional experiences.

"Newfields is an art museum and garden located on the Lilly family estate, formerly known as 'Oldfields' when they bought it. The Indianapolis Museum of Art sits on the 152 acre property right on the White River along with the Lilly Mansion, and an art and nature park."

"I got into professional fundraising at McKendree and have always had a passion for the arts. I believe that Newfields is one of the premier art institutes in the country. One of the biggest selling points was that Newfields reminded me of my time working in St. Louis at the Anheuser Busch Brewery."

The grounds are beautiful, they both have the same old school prestige

vibe, and everything is manicured. The art is beautiful as well and the donors are fun to interact with. There was a lot that interested me and the position was a step in the direction I wanted to pursue professionally."

"No day is the same at work, but my schedule is usually filled with donor meetings, doing research on donors prior to meetings, looking at research of what other art museums are doing, and working with curators on what plans they have coming up to see if I have any donor connections that might be interested."

"There is a lot of desk work involved in research, but it's mostly about networking and relationship building."

"If our undergraduate members were to take the handbook we go through at Recruitment Bootcamp, that is what I do professionally. From a fraternity standpoint, our undergrads need to be able to talk to students who like the idea of what your chapter is doing and are interested in joining the fraternity."

"When recruiting for the fraternity, and especially when working in fundraising, if you don't believe in the mission or values of the organization it's like pulling teeth. It's important to see the value in the organization you are supporting. It is a great learning skill for the future, you are always going to have to network with people who are from different backgrounds."

As an alumni you have volunteered for national AKL events, why is it important to volunteer and give back to the fraternity?

"I volunteered at both the 2018 and 2019 Clark-Thompson Presidents' Academy and Officers' Institute assisting with Recruitment Bootcamp. I had a blast volunteering because I do all of those functions professionally."

"I enjoyed helping them develop their recruitment plans, from what it looks like as a whole to what types of guys they were recruiting. Are we going after the stereotypical guy or are we being intentional with who we are



Tony celebrating his recent graduation from the Indiana University Lilly Family School of Philanthropy.

pursuing? It all helps build the pipeline for the future."

"The way we recruited last year was totally different from how we have in the past. I am hoping to get back to volunteering at Presidents' Academy and am interested to hear how chapters have organized themselves in a very digital space and if that plays a role in how they move forward."

"The most rewarding part about volunteering is that I learn just as much from them as they learn from me. After just a couple of days, I leave with a great sense of accomplishment. It's also great to know that we're making a difference and we know the fraternity is in good hands."

Continued on next page...

Tony Viviano: Continued

As an AKL alumni member, how do you keep in contact with brothers?

"I think for me it's a little different since I didn't stay the four years at SIUE. The friendships and relationships I developed are very intentional and close. We are there for each other when we need each other."

"My fraternity big brother, Nic Simpson, is a lawyer with Veterans Benefits Attorney at Simpson Legal Group, LLC. When my grandfather died he was a great help in navigating that process. Another brother, Matt Griffin, and myself text to check in on each other. We may not talk every day, but we still keep in contact and take time to visit each other."

"As alumni we're all adults with that affiliation that binds us for life. We have all been through Ritual, which is a very shared bonding experience. The big takeaway is that no matter how long your undergraduate experience was, once you graduate everyone is older and wiser. The small petty things or

arguments in the house don't matter anymore like they did in the moment."

"Despite all things, like how spread out we all are, we really do keep in touch. If there is a brother with an illness or someone passes away, we all make the time to reach out and be there for our brothers. Not just AKL but also our connections to other fraternity men and sorority women. In the end we are all part of Greek life and have the same shared experiences."

What advice would you give to our undergraduate members?

"A year ago I would have said something different. Now I would say to make sure you are building those positive connections. Try new stuff, try all of the things you would want to try if you could. If in-person events can't happen, try every digital experience."

"Persevere. Take everything as a lesson on how to be flexible. The transition from in-person to online was not an easy one. Day to day, no one knew

what to expect. Those graduating now will be the most flexible and agile graduating class of all time"

What advice would you give to students interested in joining Greek Life?

"It is important to look at every fraternity when you are looking to join Greek Life. Get to know guys from every chapter and go to events at every chapter. Then put your time and work into joining where you have the best connections. Do the time to do your research, having the best fit is important for the best fraternity experience possible."

Any final thoughts?

"The big thing is to have fun in the moment. School is important but so is finding the balance of getting good grades and having a social life. Later in life when it's not school, it's work. It's important to learn when to start, when to stop, and how to break away with grace to find that balance."



Beta Tau alumni Matt Griffin and Tony Viviano visiting the AKL Kappa chapter house at Purdue.

"Additionally, take time to learn your strengths. I learned as a student that I write my best in the wee hours of the morning and edit later in the day. Today in my professional career, I apply that by writing early in the morning before work at 6am and edit later in my work day. College is an opportunity to learn how you work best. This is an example of what you can talk about in job interviews when they ask you about your strengths."

Thank you Tony for taking the time catch up with us at InsideAKL and share your recent adventures and accomplishments. We wish you well in your new ventures and are excited to heard what you accomplish!

Alpha Zeta Chapter

Northwest Missouri State University

(Top Right) Alpha Zeta chapter welcomes brothers back to campus at Northwest Missouri State University with their first chapter meeting!

Following university safety guidelines and policies, they were able to conduct a professional business meeting in fraternity pin attire.

(Bottom Left and Right) Alpha Zeta chapter brothers volunteer to assist fellow students during Move-In as well as welcome them to campus.



Welcome Aboard!

Katie Brady, AKL NHQ Recruitment & Expansion Specialist

Join us in welcoming Katie Brady to Alpha Kappa Lambda National Headquarters as our Recruitment & Expansion Specialist! Katie lives in Wichita, KS, and is a proud member of Alpha Sigma Alpha. She attended Missouri State University where received her Bachelor of Science in Public Relations and her Master's Degree in Student Affairs in Higher Education.

Katie has served as Director of Fraternity and Sorority Life at Emporia State University for the past five years and brings a wealth of experience and knowledge to our team. Welcome Katie!

Katie, tell us more about yourself, your collegiate experience, and your affiliation with Greek Life.

"Well, as an undergraduate I enjoyed activities, leadership, and football games. Finding a sorority that reflected my values and had some great women to grow with and look up to really changed my path. Literally, I thought

I was going to be a nurse all through high school until I met my big and my best friend in the chapter that both happened to be Public Relations majors. When nursing didn't work out they were the people that showed me I had a lot of talent for working on events, public speaking, and campaigns."

"My sorority affiliation continues to give me more than I could ever give back. If your heart and mind are open to it, fraternity/sorority can change your entire life and guide you to some pretty amazing places."

What has been your career path so far and what professional interests are you looking forward to?

"As a graduate student, I worked with fraternities and sororities at Missouri State as well as leadership development. As part of my graduate program, I was afforded the opportunity to spend a summer at the University of Alabama where I helped in orientation and special programs. And most recently I have spent 5 great



years at Emporia State University as the Director of Fraternity and Sorority Life. That experience allowed me and my students to expand and develop the reach of fraternities and sororities on campus."

"Looking towards the future, I am excited to work with the great members of Alpha Kappa Lambda chapters of the midwest. The midwest is truly the heart of fraternity and sorority life. I grew up here and I truly believe some of the best leaders come from heartland."

Outside of your professional interests, what other hobbies or interests do you have?

"I have a few interests outside of work



including my 3.5-year-old Austrian shepherd/red heeler mix named Ellie. She keeps me and my family pretty busy. I am a big sports fan. I will be attending some Kansas State, Missouri State, and Chiefs football games this year. I am really looking forward to more country and rock concerts. I also enjoy movies, being outdoors, and golfing."

What interested you about joining Alpha Kappa Lambda National Headquarters Staff? What are you most excited for at AKL NHQ?

"Alpha Kappa Lambda has been part of my fraternity/sorority experience since undergrad."

Continued on next page...

"I know the organization well and the staff is all very dedicated to the student experience. I am most excited about meeting the members and helping them create the best environment for sharing the story of their chapter.

"Especially after the last year and a half of all or part of the college experience being virtual, we all need to feel like we belong to something bigger than ourselves. Alpha Kappa Lambda is a great place to find that.

What do you hope to bring to the "Recruitment & Expansion Specialist" position? What are you looking forward to gaining from this role?

"I hope to bring some fun, creativity, and help chapters make effective decisions regarding recruitment strategy. I have worked with both fraternities and sororities for a while now and I hope my experience plus the connections I have made along the way can serve myself and the members of Alpha Kappa Lambda well."

What advice would you give to our undergraduate members? What advice would you give to students interested in joining Greek Life?

"I would tell undergraduate members to enjoy their time in the chapter. These are the times you will look back on and remember the most."

"I would tell potential new members interested in Fraternity to keep an open mind and know that it's their experience. Not anyone else's. You will find the chapter that best fits you and if you give your time and talent, it can be some of the most impactful and fun years of your life."

In the AKL Creed, we state that "I accept membership in Alpha Kappa Lambda as affiliation that is binding for life."

Do you think your Greek Life affiliation and involvement in Fraternity and Sorority Life has led to a lifelong membership/experience?

"Absolutely! It has led me to friends who have become family. Mentors who have become examples of resilience and professionalism in my life. Experiences that have molded me into a professional leader. I would not be the strong, confident person I am today if not for my sisterhood and the fraternity and sorority communities I have been a part of."

Welcome Katie! Congratulations, well wishes, and questions can be sent to katie@AKL.org

Katie's primary focus will be AKL chapters in the Midwest (Kansas, Missouri, Iowa) with a focus on recruitment, chapter operations as well as other expansion resources and recruitment strategies.

A look back at the 2018 Clark-Thompson Presidents' Academy & Officers' Institute where Katie (fourth from left) joined other AKL alumni and fraternity friends as a facilitator. Thank you Katie for your continued support!



Alpha Phi Chapter

University of Idaho

Alpha Phi chapter brother welcome the newest members into the Fraternity during bid day! Alethia Kai logos!

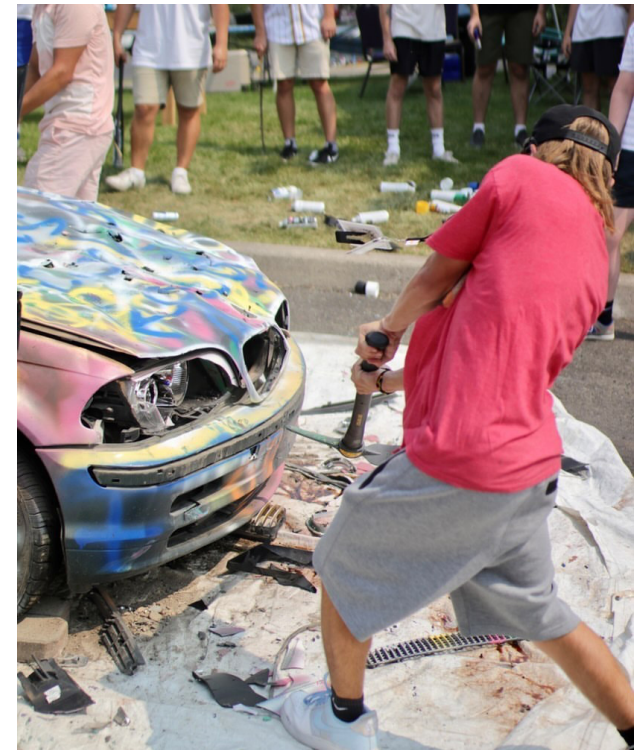
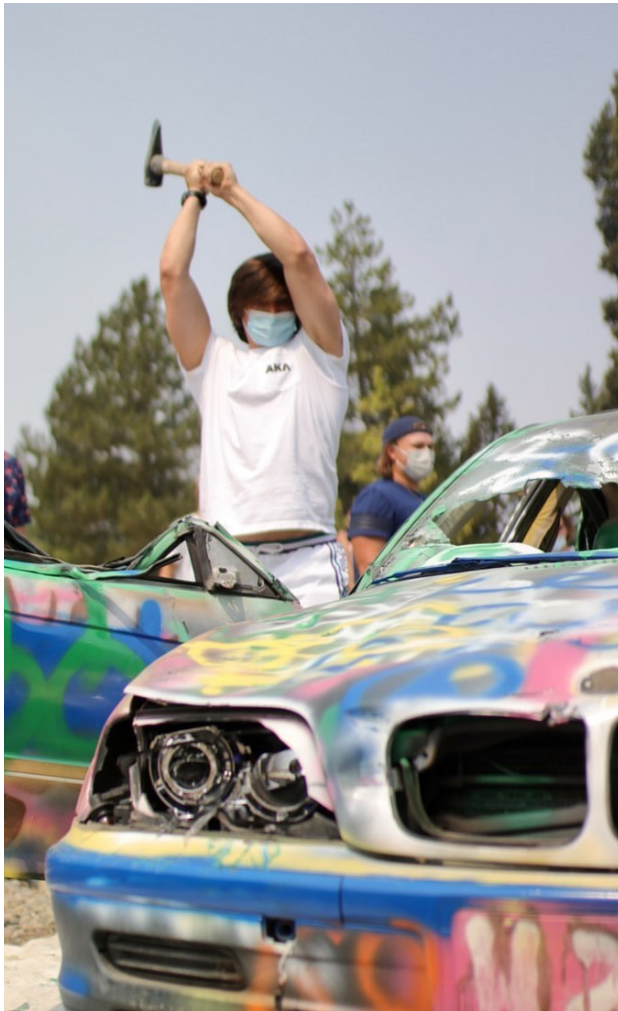
During the university's formal recruitment process, Alpha Phi chapter followed university safety guidelines and policies by holding recruitment events outside.



Alpha Phi Chapter

University of Idaho

During the University of Idaho's formal recruitment process, Alpha Phi chapter held their annual "Car Bash" recruitment event! The old car was donated by a chapter alumni.



Remember Our Responsibilities

Be Safe. Be Smart. Be Men of Character.

Be safe. Be smart. Be Men of Character. The health and safety of our brothers is an important area of membership in Alpha Kappa Lambda. Throughout the summer and progressing into this fall semester, National Headquarters launched and will continue to post a social member campaign encouraging our members to “remember our responsibilities”

The posts included discussions on the Creed of AKL, Risk Management Best Practices, and what it means to be a “Man of Character Committed to Making a Difference.” Following the launch of this campaign, the same information will be shared in this and upcoming issues of InsideAKL.

Risk Management Guidelines

The Alpha Kappa Lambda Risk Management Guidelines include the following provisions and recommendations. These are intended to apply to all levels of membership in the organization. For the full guidelines, visit www.AKL.org [here](#).

Bills: Paying Dues on OmegaFi

As a part of membership in any organization, Fraternity Dues, Fees, and Insurance are integral to the operation of Alpha Kappa Lambda Chapters. It is members’ responsibility to pay their dues and it is the chapter’s responsibility to hold their members accountable. For more information, check out the following article “2021-2022 National Dues, Fees, and Insurance.”

Chapter Roster Updates Membership & Billing Statuses

Prior to the start of each semester, chapter leadership must update their chapter’s online roster with AKL National Headquarters on Vault via OmegaFi. There are only three types of membership statuses with AKL.

Active Members are enrolled in classes and on campus. This includes both new members and initiated brothers. Alumni Members have graduated or left school who are not on campus

at an institution with AKL. Expelled Members are those who, for individual reasons, are no longer members of the Fraternity. Chapters must complete an expulsion process to expel members.

Each member also has “billing status” that refers to what each individual member should be billed prior to the semester starting. Billing statuses must match individual membership statuses to ensure proper billing is achieved.

Membership Entry New Member Reporting & Paperwork

Once a new member accepts his bid to become a member of the Fraternity of Alpha Kappa Lambda, he must be added online at Vault by OmegaFi to be officially added to the chapter roster. Once added to the online roster, he is officially a new member of the Fraternity and must begin his five day Membership Entry Process. The first step of the process is having each new member complete their new member paperwork.

Once completed, new members are then eligible for an Initiation Report at the conclusion of the Membership Entry Process. After new members have been initiated, chapter officers are responsible for completing an Initiation Report. New members will



not be listed as “Initiative - Active” on the chapter roster until an Initiation Report has been submitted.

AKL Online Education

AKL Online Education is compiled of modules for new members, chapter officers, and all active undergraduate members. AKL Online Education is accessible to all brothers by logging into myAKL.

All new members are required to complete the “AKL 101 - New Member Education” prior to Initiation. This module focuses on fraternity history and contains new member information and resources. For more information on fraternity education, check out the following article “AKL 101: AKL Online Education.”

Please contact AKL National Headquarters with any questions regarding these best practices.

2021 – 2022 National Chapter Dues, Fees, and Insurance

'21 - '22 New Member

\$425

upon joining

National Membership Entry Fee = \$320.00
National Membership Dues = \$105.00
Meetings Fee = \$0.00

Fall 2021 Semester

\$215

per member, plus local dues & fees

National Membership Dues* = \$105.00
National Insurance* = \$110.00
Meetings Fee = \$0.00
*incentive or surcharge may apply

Spring 2022 Semester

\$250

per member, plus local dues & fees

National Membership Dues* = \$105.00
National Insurance* = \$110.00
Educational Programming Fee = \$35.00
*incentive or surcharge may apply

Incentives & Surcharges

- 10% National Membership Dues increase for Spring 2022 semester for chapters 10% below their Fall recruitment minimum. (increase of \$10.50)
- 10% National Membership Dues decrease for Spring 2022 semester for chapters 10% above their Fall recruitment minimum. (decrease of \$10.50)
- 10% National Membership Dues increase for chapters out of compliance. This is a failure to complete compliance requests and/or semesterly Risk Management Report. (increase of \$10.50)
- 10% surcharge on National Insurance for chapters that had a Risk Management violation the previous semester. (increase of \$11.00)

National Membership Entry Fee

This is a one-time National Membership Entry Fee to join the Fraternity of Alpha Kappa Lambda. The National Membership Entry Fee must be paid in full along with the National Dues within 30 days of joining. Full or partial payment of all charges prior to Initiation Ceremony is strongly encouraged. While individual new members are responsible for paying their balance, the chapter is responsible for making sure the Membership Entry Fee and National Dues are paid in full. If a member drops or is removed from the roster, the chapter is still responsible for making sure that individual pays, otherwise it is the responsibility of the chapter.

Educational Programming Fee

Previously the Meetings Fee, the Educational Programming Fee serves the same purpose and is billed once a year and is to be collected from every man on the roster. Billing occurs in January. The Educational Programming Fee must be paid along with the National Dues & National Insurance within 15 days of the start of the semester.

National Membership Dues

The National Dues are billed twice a year and are to be collected from every man on the roster. Billing occurs in August and January. The National Dues must be paid along with National Insurance within 15 days the start of the semester.

National Insurance

The National Liability Insurance is billed twice a year and is to be collected from every man on the roster. Billing occurs in August and January. The National Insurance must be paid along with National Dues within 15 days the start of the semester.

Gamma Rho Chapter

Arizona State University

Brother Michael Potuzak (Top Right) traveled to Athens, Greece this summer. While chapter president Matthew Wachter (Bottom Left) spent part of his summer studying abroad in Spain.

(Bottom Right) Dylan Leonard and Matthew Moscatello enjoying some time outside, hiking in Sedona, Arizona on a brotherhood retreat.



FRATERNITY EDUCATION

AKL 101

AKL Online Education

One of the benefits in Alpha Kappa

Lambda is our vast library of online education available to all members. In addition to specific officer tracks designed to assist chapter operations and officer transitions, there are three fundamental courses that all members must complete.

Chapters must ensure that all members, new and previously initiated, have completed these courses in order to be in good standing with National Headquarters. AKL Online Education can be accessed by logging into myAKL at www.AKL.org

AKL Foundations

The AKL Foundations course of the New Member Entry Process is designed to make joining members better leaders by educating them on the issues facing college students today. As members of the Greek system, students are campus leaders and role models.

As leaders they may face difficult and

challenging situations. It is how they respond to these difficult situations that help them learn and develop into effective leaders who make a positive contribution to the campus community.

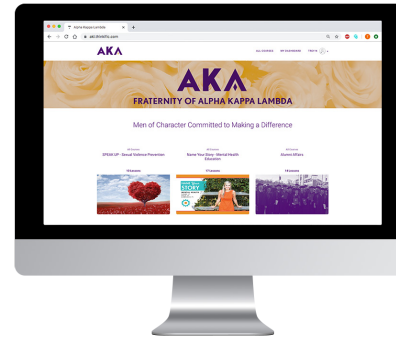
While our members may not encounter these challenges personally, they may have brothers or friends who do. Through the AKL Foundations course our members will practice the decision making necessary to effectively deal with alcohol and drugs, hazing, sexual violence, and mental health issues in AKL chapters and the community.

AKL Foundations will also cover; Drugs & Alcohol risk management and best practices, Anti-Hazing education, Sexual Violence Prevention, and Mental Health resources.

SPEAK UP

Sexual Violence Prevention

This course will educate members of AKL as to the devastating impact of sexual violence on victims, in fraternities and sororities, and the

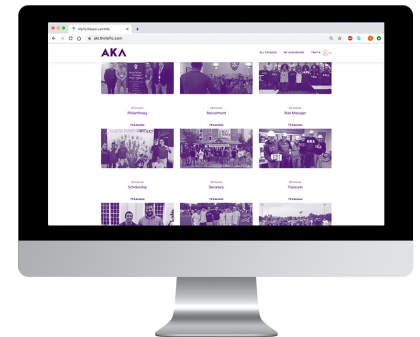


university community. Many members will say initially that "I would never do anything like that." or "That does not happen in my chapter."

By completing this module and engaging in the discussion groups, chapter members will understand the pervasive nature of sexual violence and that it is all of our responsibility to act and speak up to prevent sexual violence.

Name Your Story Mental Health Education

By completing the Name Your Story Mental Health Education course,



members will become aware of the most common mental health disorders diagnosed among college students including depression, anxiety, suicide, and related risk behaviors involving alcohol, illicit drugs, and non-medical use of prescriptions drugs.

Members will be educated as to how to ask for help if they are concerned about their thoughts or behaviors or are concerned for a brother or friend. Through professional presentations and group discussions AKL members recognize the importance of eliminating the stigma associated with seeking help with mental health issues.

Gamma Beta Chapter

University of Alabama

(Top Right, Bottom Left and Center) During the University of Alabama's formal recruitment process, Gamma Beta chapter hosted a basketball tournament for all potential new members interested in AKL!

(Bottom Right) Gamma Beta chapter enjoys a home cooked meal at the chapter house.



Benefits of Fraternal Affiliation



Can Fraternal Affiliation Help Members Survive a Pandemic?

Originally published at www.HolmesMurphy.com

Earlier this year, the Postsecondary Education Research Center (PERC) at the University of Tennessee Knoxville [released a report](#) indicating that fraternity and sorority affiliated students are experiencing higher levels of positive mental health along with decreased rates of depression and anxiety.

Our insurance partners at Holmes Murphy took a look at how fraternities and sororities offer support systems and offer mental health benefits.

Covid-19 & Mental Health

According to the Centers for Disease Control and Prevention, the COVID-19 pandemic has created challenges for all of us that can be stressful, overwhelming, and can cause strong emotions. Public health actions like social distancing can make us feel isolated and lonely, and can increase stress and anxiety.

In fact, a recent article in Nature shared that more than 42 percent of people

surveyed by the U.S. Census Bureau reported symptoms of anxiety or depression in December, an increase from 11 percent the previous year.

That same Nature article shared, “studies and surveys conducted so far in the pandemic consistently show that young people, rather than older people, are most vulnerable to increased psychological distress, perhaps because their need for social interactions are stronger.”

For students, it can be even worse. Active Minds surveyed 2,086 college students in April 2020 asking them about the impact COVID-19 has had on their mental health. They found that:

- 1 in 5 college students say their mental health has significantly worsened under COVID-19
- 80% report that COVID-19 has negatively impacted their mental health
- 91% report feeling stress or anxiety
- 81% feeling sadness
- 80 % report feeling loneliness

Impacts on Mental Health

Active Minds found that the most important things for leaders to be thinking about for student mental health during and after the pandemic include:

- Increased academic support. Leniency, accommodations, and flexibility
- More mental health resources. Increased investment in counseling and coping resources
- Focus on soft skills. Empathy, compassion, communication, and validation for the burdens students are experiencing
- More opportunities for social connection.

Fraternal Affiliation Benefits

Circling back to the PERC report, “Fraternities and sororities provide collegiate members and alumni with opportunities for growth and development, including personal and professional support as well as

meaningful and impactful connections.” Those connections and opportunities are the kinds of things the experts are touting as ways to cope with the stress and anxiety brought on by the pandemic. Dr. Gary Pike of Indiana University recently found that fraternity and sorority membership is associated with higher levels of engagement for students.

Let’s look at the good in fraternities and sororities. Members are more engaged, report higher levels of positive mental health, have built-in support systems and ways to engage with one another, and can partner with their host institutions to improve their campus communities.

The pandemic has taken a great deal from all of us, but as we come out on the other side, can we use our existing organizations to make things better? I think so.

Want to Get Involved?

Subhead

Alpha Kappa Lambda understands how vitally important our alumni and volunteers are to the success of a chapter. There are several different ways to volunteer with the Fraternity. If you are not currently a volunteer but want to get involved with and active chapter or during an upcoming expansion, contact us at info@akl.org

Chapter Advisor & Volunteer Monthly Conversations are held to serve as an opportunity to connect with the Executive Director of the Fraternity, fellow advisors, and volunteers. All conversations take place Tuesdays at 12:30 pm EST with more information found [here](#)!

August 10, 2021
September 14, 2021
October 12, 2021
November 9, 2021
December 14, 2021

If you are interested in learning more about volunteer opportunities, fill out a volunteer interest form [here](#)!

If you know someone that would make a great Alpha Kappa Lambda member, recommend a potential member [here](#)!

"I accept membership in Alpha Kappa Lambda as affiliation that is binding for life."

Upcoming Growth

Spring 2022: Zeta- University of Michigan
Founded: February 9, 1924

Fall 2022: Kappa- Purdue University
Founded: May 20, 1934

Spring 2023: Beta Nu- VCU
Founded: September 14, 1985

Fall 2023: Upsilon- University of N. Colorado
Founded: May 12, 1957, Reissued: April 16, 1999

Spring 2024: Phi- Oregon State University
Founded: January 25, 1958

Spring 2024: UNC-Wilmington
New Institution

Fall 2025: Towson University
New Institution

Fall 2026: Alpha Iota- University of Wyoming
Founded: May 24, 1964

Unscheduled: Eta- Washington State University
Founded: October 15, 1927

Unscheduled: Loyola University New Orleans
New Institution

Active Chapters

Delta: University of Kansas
Lambda: Emporia State University
Mu: The Ohio State University
Xi: Truman State University
Sigma: University of Central Missouri
Tau: Pennsylvania State University
Chi: California University of PA
Psi: Iowa State University

Alpha Zeta: NW Missouri State University
Alpha Lambda: Northern Illinois University
Alpha Omicron: University of CO Boulder
Alpha Rho: University of Texas-El Paso
Alpha Phi: University of Idaho
Beta Tau: S. Illinois University - Edwardsville
Beta Psi: Missouri State University
Gamma Alpha: University of Missouri
Gamma Beta: University of Alabama
Gamma Gamma: Rutgers University
Gamma Delta: University of Montevallo
Gamma Theta: Boise State University
Gamma Lambda: Temple University
Gamma Xi: Clayton State University
Gamma Omicron: Dalton State College
Gamma Pi: University of Connecticut
Gamma Rho: Arizona State University
Gamma Sigma: Old Dominion University
Gamma Tau: Indiana University
Gamma Upsilon: Saginaw Valley State University
Kutztown University: Provisional Chapter

InsideAlumni

Why Did You Join AKL? Share Your Story with the Fraternity!

Going to college, I never considered joining a fraternity. I had a preconceived idea of Greek life based off misinformation. I thought joining a fraternity meant hazing and refused to let myself be a part of that.

When I started my undergraduate career at Virginia Commonwealth University, I knew a few people at VCU but was not making a lot of friends in my classes. During Welcome Week, I got a friend request from someone I did not know but assumed I met on campus. I accepted the request and got a message that said "Have you thought about Greek life?"

I immediately dismissed the idea and did not reply. I kept thinking about that message though, and started to think "I would look really good in the t-shirt." Yes, the only reason I started to consider Greek life was for the t-shirt, or hard letters, as I later learned they were called. I had a lot to learn including learning that the man who had sent me the friend request was the chapter president at the time.

I reached back out and we set up a meeting on campus.

He was talking about recruitment, and his Executive Board, and bids. All of which I knew nothing about. What caught my interest was how he talked about the mix of social aspects and community service. Through my interview and without attending a recruitment event I accepted my bid.

I never looked back and five years later after graduation I still work for AKL National Headquarters. Working with our undergraduate members, I share my story so I can hear theirs. I am sharing it with you now so I can hear more alumni stories. In future InsideAKL issues I want to feature more stories of why you joined AKL and what it means to be an alumni. Please share your story with me at trey@AKL.org so I can share our alumni stories with the Fraternity.

Trey Nunnally
Beta Nu '12
Virginia Commonwealth University

INSIDE Alumni

Alumni & National Fraternity Announcements

Gamma Delta Anniversary Banquet

Mark Your Calendars! Gamma Delta Chapter at the University of Montevallo is planning an anniversary banquet open to all chapter membership throughout the years.

When: November 11th, 2021

Contact Greg Lee at GregLee@novusrealtyco.com for more information and to RSVP.

Alumni Spotlight Features Wanted

The Fraternity of Alpha Kappa Lambda is proud of the hard work and dedication embodied by all our members. From undergraduate members to seasoned alumni, AKL is sustained through our brothers.

One of the goals of InsideAKL is to share the achievements of our members through story-telling. In each issue we aim to spotlight an alumni member with a personalized interview.

If you know of a brother who has a strong, inspiring, or interesting story to tell, contact us at info@AKL.org with him name so we can reach out! If you would like to be featured yourself, please contact as well! Interviews are conducted on your schedule and shared with the featured alumni prior to publication for approval. Alethia Kai Logos!

As an undergraduate member, you may be most familiar with myAKL as the OmegaFi portal where you completed your membership paperwork upon joining, accessed the online AKL Education, and had the option to make payments on your fraternity dues, fees, and insurance.

As an alumni member, you will continue to have access to myAKL and all its features! In our digital age where re-connecting and networking is as readily available online as it is in person, myAKL is your tool to stay connected with Alpha Kappa Lambda. Below are a few of the features available to all brothers that we want to promote and see our members utilize.

Brotherhood Job Board & Postings

AKL Online Education

Chapter & Association Search

Member & Alumni Search

Fraternity Calendar

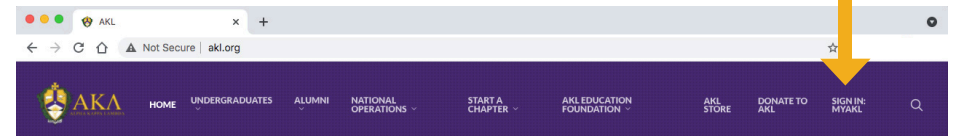
National Event Information

Chapter Information

And Many More!

myAKL: How to Login

1) Visit www.myAKL.org or access myAKL at www.AKL.org



2) Enter your email and password

3) Forgot Password? Click "Forgot Password" link, enter your email, click continue. Forgot email? Contact AKL NHQ.

4) Need Access? Click the "Get Access" link, select "myOmegaFi," select "Alpha Kappa Lambda," select "Alumni Enrollment," and enter your information to find your profile.

Questions?

Contact National Headquarters at info@AKL.org or (317) 564 - 8003

ALPHA KAPPA LAMBDA



EDUCATION FOUNDATION

The Fraternity of Alpha Kappa Lambda Experience has never been more important than it is today. On college campuses, in small towns, and big cities alike, society needs men committed to the Five Ideals of AKL: Judeo-Christian Principles, Leadership, Scholarship, Loyalty, and Self-Support.

The same issues which affect the world also affect Alpha Kappa Lambda. Our organization can help shape the future leaders of society by providing programming, scholarships, and guidance to our members.

We must bring ideals and values to the leaders we will depend on to make the world a better place – but we need your help!

[Click Here to Donate to the AKL Education Foundation](#)



When you give to the Alpha Kappa Lambda Education Foundation you help educate and empower young men who are committed to making a difference in their communities by learning, embracing and exemplifying AKL character.

All gifts to the Alpha Kappa Lambda Education Foundation are tax-deductible to the extent permitted by law.

Create Academic Success



Expand and endow our academic scholarship program. We cannot teach and provide young men with the AKL experience if they can't afford to attend college.

Develop Our Chapters



Instill our values and fortify and strengthen the young men in every chapter across the United States.

Flexibility for the Future



To adjust to whatever challenge may come our way, we must be nimble enough to react to the needs of today's generation and tomorrow's.

ASK SIDE

August 2021