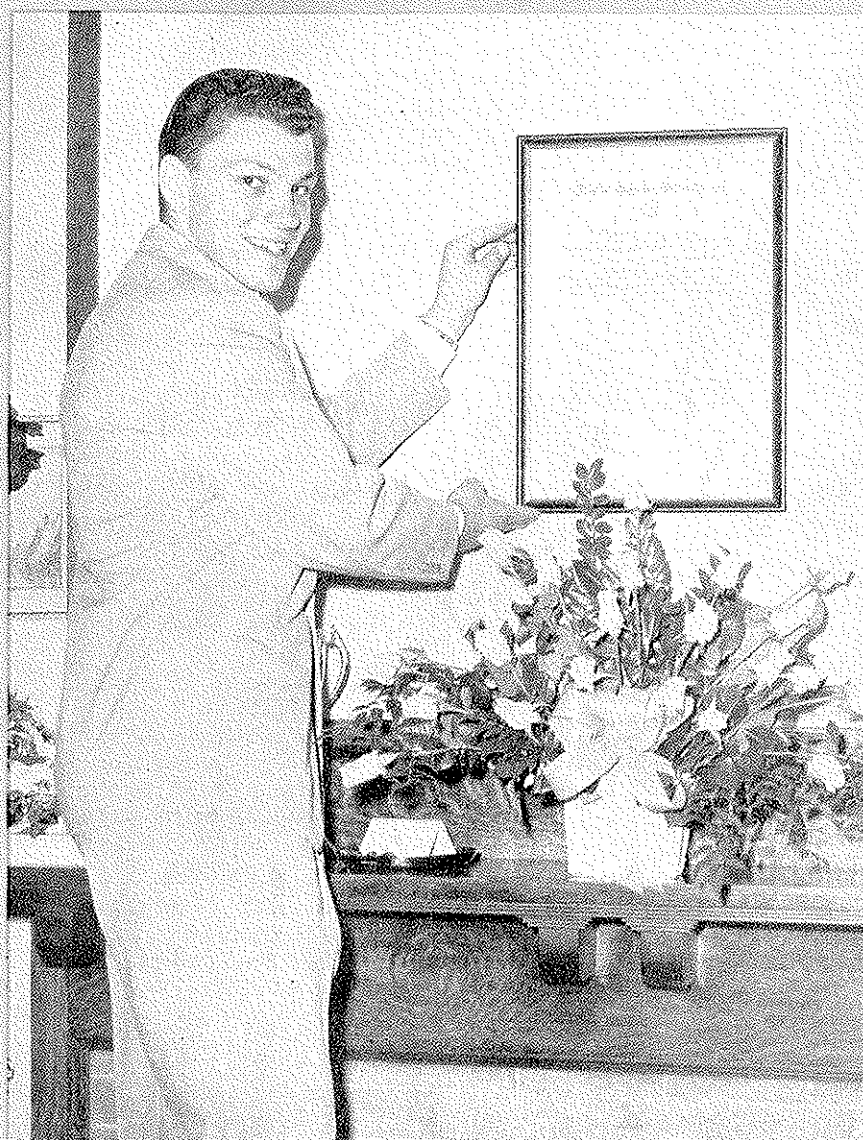


Summer '57

THE LOGOS

OF
ALPHA KAPPA LAMBDA



"A college or university has for its first purpose the academic development of each student. The objectives of the fraternity, while very important to the education of the so-called whole man, are therefore considered by many as being secondary

"A college or university wants fraternities to have social programs which do not conflict with the academic program of the institution and specifically with the academic program of the individual student. . . .

"We expect you to work with your advisers in order to carefully screen and select the right men for your group. It is up to you to prove that you are selective in your membership. The college expects you to initiate only qualified men, and to treat pledges as students should be treated. . . . In general, we expect your chapter members to be responsible adults and your pattern of conduct to be that of gentlemen. . . .

"We want you to encourage the development of artistic and scholarly tastes among your members. We want you to aid your members to use their leisure time in a wholesome way. . . .

"Alpha Kappa Lambda has a splendid reputation in the fraternity world. I congratulate each of you on becoming a member of this fine organization. . . ."

—Dr. R. D. Anfinson,
Dean of Students, Eastern Illinois
State College, at installation of
Rho chapter of AKL.

Our Cover

AKL active and alumni members across the nation were thrilled this past spring, as four collegiate groups received charters, thereby placing the fraternity on four new campuses: Eastern Illinois State College, Central Missouri State College, Pennsylvania State University, and Colorado State College.

Here, in a symbolic ceremony, Pete Marta, president of new Upsilon chapter, proudly places the charter on his chapter house wall, at Colorado State College.



Editor

ROBERT L. DAVIS
709 Schweiter Bldg.
Wichita, Kansas

THE LOGOS is published three times a year, Winter, Spring, and Summer, by Alpha Kappa Lambda Fraternity.

The Logos

OF

ALPHA KAPPA LAMBDA

Vol. XXVII

No. 3

Contents

Articles:

"Fraternity Growth"	2
<i>by Lewis J. Bacon</i>	
"Rho Chapter Given Charter"	5
"Sigma Joins The Ranks"	8
"Tau Chapter Installed"	10
"Tau Chapter Has 38-year History"	12
"Upsilon Is Newest Chapter"	14

Logos Foundation Announces Scholarship	16
Upsilon Inaugurates Service Project	17
Theta Forms Non-Profit Group	18
Pi, Xi Chapters Win Awards	19
Reports on The Alumni	20
Report From National	25

Chapter News:

Collegiate Chapters	26
Alumni Chapters	37
Directory	38
The Last Word	40

Summer, 1957

FRATERNITY GROWTH

by

LEWIS J. BACON

Executive Secretary, AKL

At the end of the greatest year of expansion in the history of Alpha Kappa Lambda, Lewis Bacon, executive secretary, gives his answers to questions most frequently asked about expansion:

Why is AKL one of the smaller fraternities in number of chapters?

There are several answers to this question. First, AKL is one of the youngest nationals. Some fraternities are 100 years older. Second, AKL has never merged with another national fraternity. Many of the larger national fraternities are actually several nationals that have at one time gotten together for greater strength.

It is interesting to note that Alpha Kappa Lambda considered mergers with other groups until 1946 when a stand was made to build our own fraternity through a sound expansion program. One has only to study our history to realize that our first forty years of operation found us busy struggling for our very existence as we faced World War I, the Great Depression, World War II, and the Korean War. I think it also important to realize that until 1949, AKL operated only with volunteer help to find and look over expansion possibilities.

Why do we install chapters in small colleges instead of larger universities?

Let me first say that we do not install AKL chapters in smaller schools INSTEAD of universities. When we locate a school at which we feel there is room for another fraternity, we open negotiations with the administration regardless of the size of campus or the number of students enrolled. As these schools open their doors to AKL, we work to build another good

chapter. You need only to review the locations of our newest ten chapters installed under this program to see that the program includes both large and small schools. They balance out.

What determines the campus on which we add a chapter?

We are presently in contact with more than 100 colleges and universities in regard to future expansion. Most of these schools are located in the central and western areas where we have active AKL chapters that can assist in building a new chapter, although we are investigating schools in every section of the U.S. Through these contacts, we are able to keep in touch with the student affairs offices and are informed when openings develop.

Many of our latest chapters were started from "scratch." Why don't we get established locals instead?

The local fraternities have all but vanished from the college scene. Only a handful of established groups are still in existence. It is my general belief that better AKL chapters can be built through the method of starting them ourselves rather than attempting to change the established traditions, habits, and rules of established locals. Once in a while, however, we find an established local that has refused other nationals on the grounds of a lack of similarity. Sometimes, as in the case of Tau



Lewis Bacon

Chapter at Pennsylvania State University, we find them operating parallel to our standards and beliefs. All that we needed at Pennsylvania State was an introduction to Sigma Phi Alpha. The merger of this group and AKL will strengthen us both. However, such groups are the exception rather than the rule.

Are there risks to adding chapters so rapidly?

There are risks to adding chapters, period. We all realize that even established chapters frequently find themselves in trouble, in rushing, finances, housing, scholarship, etc. All new chapters have an overabundance of problems as they attempt to grow and stabilize with the benefit of little, if any, experience. On housing, for example, a new group must borrow 100% if they want to purchase a house. If they are lucky enough to locate rental property, they must still locate funds to purchase furniture. The risk element is lower, however, than it appears on the surface due to the tremendous

amount of enthusiasm and spirit the members of a new group have in meeting these challenges. We must be mindful not to add chapters too rapidly as we must build our national program so that each addition has a sound footing.

How do we keep pace nationally?

We will have to expand services of all types. With the addition of a few more chapters, we will have to employ a field representative to visit our chapters and work with them in trouble areas. I found out firsthand this past year that one man is unable to give all our chapters enough visitation time to help them solve all problems. An almost continual travel program during the 1956-57 school year allowed me to visit each chapter for a few days and to give additional time to some of our weaker chapters. We must continue to add to the services we already offer. We need additional promotional material, leadership guide booklets, better service in processing initiations, and the like. It takes growth

Chapter	School	Estab.	Name of Local
Alpha	California	1914	Los Amigos Club
Beta	Stanford	1920	colonized
Gamma	Illinois	1921	Bushnell Guild
Delta	Kansas	1922	Ochino
Epsilon	Wisconsin	1923	colonized
Zeta	Michigan	1924	Cygnus
Eta	Washington State College	1927	Diversity Club
Theta	Washington	1929	colonized
Iota	Kansas State College	1930	Delta Nu Omega
Kappa	Purdue	1934	Cimerion
Lambda	Kansas State Teachers College	1949	colonized
Mu	Ohio State	1950	Omega Xi
Nu	Ohio	1951	Beta Sigma
Xi	Northeast Missouri State College	1953	colonized
Omicron	College of Pacific	1955	colonized—Logos Fdn.
Pi	Millikin University	1955	Sigma Phi Alpha
Rho	Eastern Illinois State College	1957	colonized—Logos Fdn.
Sigma	Central Missouri State College	1957	Beta Sigma Chi
Tau	Pennsylvania State University	1957	Sigma Phi Alpha
Upsilon	Colorado State College	1957	colonized—Logos Fdn.
Colony:	AKL Club, Oregon State College (Due to be installed Oct. 27, 1957)		

and progress to adopt these services. The National Executive Council is concerned and has already taken steps that will allow us to expand facilities.

How large is AKL trying to be?

At the 1949 Conclave in Pullman, Washington, it was stated that AKL should work toward a goal of 25 chapters. I feel that a specific number is not important. We should continue to establish good chapters on any campus showing a need for a fraternity such as ours.

How many chapters do you think we will have by 1960 or 1965?

This is the toughest question yet! I can only guess. Because of the great influx of enrollments that will hit our campuses during the next ten to fifteen years, and because we are in a position of wanting to expand, I believe we will continue to grow quite rapidly. I feel that within five years, we will be able to establish chapters on almost any campus we want. My wild guess: 25 by 1960 and 40 by 1965.

Where will we concentrate expansion during the 1957 - 58 school year?

The AKL Club at Oregon State College in Corvallis will be installed in October. The Logos Foundation will help colonize on the Iowa State College campus. We are also planning to concentrate other efforts in the Pennsylvania-New York area.

How do we stand in number of chapters compared with other NIC fraternities?

According to records I have on hand, we are tied with Triangle for 49th. Kappa Delta Rho, Delta Phi, FarmHouse, Phi Alpha, Kappa Nu, Phi Mu Delta, Sigma Phi, Beta Sigma Rho, Delta Psi, Kappa Alpha Society and Beta Sigma Psi have fewer chapters than do we. In 1949, we were the smallest.

How can AKL's help on the expansion program?

There are a number of ways each AKL can help add good chapters to the fraternity. If you are near a campus that has no AKL chapter, investigate the chances of AKL receiving authorization to come on campus. Deans have told me often that an alumnus visiting their office in regard to a chapter of their fraternity on campus indicates true interest and is very impressive. You might attempt to kindle a spark of interest in a student's mind in the starting of a "new" fraternity. For brothers not living close to a college, the Logos Foundation can serve as an agency to channel financial help to work for AKL expansion. It is through the Logos Foundation that AKL will grow!

Robert L. Richardson, Purdue '39, is chief engineer with the Torsion Balance Company in Clifton, New Jersey. He lives at 42 Brookfield Ave., Glen Rock, New Jersey.

LeRoy H. Fischer, Illinois '39, is an associate professor of history at Oklahoma A.& M. College in Stillwater. The Fischers have three children: James LeRoy, 4; Barbara Ann, 3, and John Andrew, 1. The family address is 1010 West Cantwell Ave., Stillwater, Oklahoma.

William Carr, Kansas '54, is still at Kenrick Seminary in St. Louis, Missouri. He was ordained a sub-deacon in the Catholic Church on June 1, 1957, and expects to become a priest in March of 1958.

Malcolm L. Denise, Michigan '35, is general industrial relations manager for labor relations for the Ford Motor Company. His family, including four boys and one girl, live at 15429 Essex, Grosse Pointe, Michigan.

Rho Chapter Given Charter

Logos Foundation Scholarship Produces Chapter at Eastern Illinois State College

Alpha Kappa Lambda's fifteenth active collegiate chapter was installed as Rho chapter at Eastern Illinois State College on March 24, 1957. This was the result of a year's growth by the Alpha Kappa Lambda Colony organized early in the fall of 1956 by Brother Gary Haxton (Emporia State '58), recipient of the Logos Foundation's fourth expansion scholarship. Rho's installation marks the third collegiate chapter in Illinois.

The installation week end was marked by all the color and excitement of a typical AKL installation . . . a marathon, initiation, mixer, initiation breakfast and the public charter presentation ceremony. The crowning of an "Installation Sweetheart" added a new thrill to the festivities.

As far as the seventeen charter members were concerned, the first official event of the week end came at 4:15 Saturday afternoon when they started a national test on the **Fraternity Manual**. At eight o'clock Saturday evening, the charter members and pledges were

joined by the early-arriving brothers of Gamma and Pi chapters from Illinois and Millikin respectively, and representatives from sororities on campus, for a mixer and dance in Lincoln Hall's dining room. Punch and cookies were served and the new members of AKL at Eastern Illinois are willing to bet that frequent visits to the campus will be made by brothers from Gamma and Pi as the result of some acquaintances made during that event.

Almost the entire Gamma chapter was on the spot by midnight to start preparations for an early Sunday morning initiation. By eight-thirty Sunday morning, AKL had sixteen new members, not counting Brother Haxton who was recognized as a charter member.

The initiates sponsored an initiation breakfast in the Douglas Hall dining room for all visiting brothers and guests from the College. Brother Jon Guyton, president of Gamma, presided at the breakfast and introduced Dr. Quincy Doudna, president of East-



Rho Chapter, 1956-57



RHO. It was a proud day for AKL when Rho chapter was installed on March 24. At top, Dr. George DeKay, past National AKL President, presents the charter to Kent Smith, chapter president, while Lewis Bacon, AKL's Executive Secretary, looks on.

It was a proud day for Rho, too, at center, when President Smith displayed the charter to the "Installation Sweetheart" Phyllis Oakley and her three attendants; and, at bottom, when friends and guests gathered to enjoy the reception at Pemberton Hall.

ern Illinois State College; Lewis Bacon, National Executive Secretary of Alpha Kappa Lambda; Rex Syndergaard and Anthony Soures, newly-initiated honorary members, and William Shuey (Purdue '49), president, Chicago Alumni Chapter. Dr. William Yardley, Director of Social Activities at Eastern Illinois and province chief of Beta Theta Pi Fraternity, spoke to the initiates about membership worth and welcomed all guests to the Eastern Illinois campus. Brothers of Alpha Kappa Lambda then joined to attend the First Methodist Church as a group.

The highlight of the week end started at 2:30 Sunday afternoon with the public charter presentation ceremony held in Old Auditorium. Over two hundred persons were on hand to participate in this event while another twenty-five were busy completing a marathon run from Decatur that started early Sunday morning. The fifty miles were covered in eight hours by members of Pi Chapter at Millikin, a delegation from Kappa Chapter of Purdue and the pledge class of Gamma.

Brother Robert McCreary (Ill. '41) acted as emcee at the presentation and introduced President Doudna and Dean of Men Rudolfe Anfinson, both of whom spoke to the assembly and welcomed the visitors and Rho Chapter to the Eastern Illinois campus. Lewis Bacon introduced the attendants to the "Installation Sweetheart" and then introduced the sweetheart, Miss Phyllis Oakley of Sigma Sigma Sigma Sorority. He presented her a dozen yellow roses, the official flower of Alpha Kappa Lambda. Dr. Hummer of the faculty presented a vocal solo . . . a number selected from "Blossom Time."

Immediately following the musical number, a trumpet blast announced the arrival of the last runner of the marathon, Brother

Ed Wilson, president of Pi chapter who presented the charter to Dr. H. George DeKay as the audience cheered and applauded. Dr. DeKay, 13th National President of Alpha Kappa Lambda who served from 1947-51, told the assembly of the struggle for existence that Alpha Kappa Lambda made until after World War II and outlined the new and broad program of operation "National" is taking to offer more and more students an opportunity to participate in our way of life.

Dr. DeKay then presented the charter, during a short ritual, to Kent Smith, president of Rho chapter, who responded by thanking everyone who had helped to build the chapter and expressed confidence that AKL at Eastern Illinois could build a chapter of which both the campus and AKL would be proud. Both invocation and benediction were given by Dr. Alter, faculty member of Eastern Illinois. W. S. Myers (Ill. '26) and his son took photos of the activities and contributed their time and equipment for the occasion. The Panhellenic Council sponsored a reception in the Women's Lounge immediately following the ceremony.

Eastern Illinois State

Eastern Illinois State College had its origin in the great need for teachers' colleges, or normal schools, just prior to the turn of the century. In 1895 the Illinois Legislature passed the necessary bills for the school, and Charleston was selected as the site, principally due to the cooperative attitude of the Charleston townspeople. "Old Main" was completed in 1899.

The school opened in the fall of 1899, with a faculty of 18 and a student body of 126. Since that time, the school has added many buildings as its student body has grown, and today it serves a large area of Eastern Illinois. Newest

buildings on the campus are the Mary J. Booth Library, and the Robert Guy Buzzard Training School. Dr. Quincy Doudna, who became president of the school in 1956, is the third president in the university's history.

There are now six social fraternities on campus, and three sororities. The AKL group started in 1956 as a result of correspondence between Lewis Bacon and Dean Rudolfe Anfinson, and Gary Haxton, Emporia State '58, was elected to transfer to Eastern Illinois to survey possibilities of colonization, assisted by a Logos Foundation scholarship.

The new group organized on November 5, 1956, following a meeting at which 23 students heard Lewis Bacon explain the requirements for affiliation with Alpha Kappa Lambda. Dean Anfinson, Dr. Syndergaard, and two AKL alums also participated in the meeting.

The members of the AKL Club moved fast to establish themselves on campus, by participating in intramurals, holding several parties and serenades, undertaking a community service program, and conducting regular fraternity meetings and activities. Recognition by the school administration came almost immediately, and the group then petitioned AKL for a charter.

William H. Severns, Illinois '45, is doing research on titanium with DuPont in Wilmington, Delaware. He received a Ph.D. in chemical engineering from the University of Delaware in 1950. His address is 2636 Sherwood Drive, Sherwood Park, Wilmington 8.

Richard Wasson, Illinois '53, received his Ph.D. in organic chemistry from M.I.T. in September, 1956, and is now employed at Monsanto Chemical Company in St. Louis. He and his wife live at 3400 Lawn, St. Louis 9, Missouri.

Sigma Joins The Ranks

Local at Central Missouri State College
Becomes Fraternity's Eighteenth Chapter

Sigma Chapter of Alpha Kappa Lambda was formally installed at 3:00 p.m., Sunday, April 7 during formal installation activities in the new Danforth Chapel on the campus of Central Missouri State College in Warrensburg. This ceremony, however, was the climax of two days of activity that saw members of Delta (Kansas), Lambda (Emporia State), Xi (N.E. Missouri State) and Pi (Millikin) chapters joining the charter members of Sigma to participate in a marathon, formal dance, and an early Sunday initiation.

At 6:30 a.m. Saturday, April 6, the marathon started from the steps of the Delta chapter house in Lawrence, Kansas. At 11:00 that morning, members of Lambda took over the run . . . 58 miles closer to Warrensburg. Six-minute miles were the order of the day and ten miles later members of Beta Sigma Chi, predecessor organization to Sigma chapter, took over and carried the charter into Warrensburg. Lloyd Cowherd, president of the chartering group, ran the last mile through Warrensburg and upon arrival on the campus, a brief ceremony was held.

At eight o'clock Saturday evening, the first AKL formal was held in the Student Center with visiting AKL's and their dates serving as invited guests. The dance theme was centered around a huge plaster-of-paris reproduction of the San Francisco Bay complete with the Golden Gate Bridge . . . depicting the birthplace of Alpha Kappa Lambda.

The set was complete early in the evening with an ocean liner sailing under the bridge. Later in the evening, however, the boat was left high and dry by some mysterious disappearance of its ocean. Entertainment was offered by Misses Star Jayne and Donna Hall who each sang a vocal solo and by the "Collegiates," a group of girls on campus who have made several recordings and are a real pleasure to listen to.

Sunday morning, following initiation of 25 Sigma chapter members in ceremonies conducted by members of Delta, all AKL's were guests of the initiates for breakfast in Todd Hall. Dr. Warren C. Lovinger, president of C.M.S.C., welcomed AKL to the campus in an address given at a public char-

ter presentation ceremony Sunday afternoon. Richard Hawk (Emporia State '55) acted as master of ceremonies. Dean Frederick J. Moreau (Wisc. '32), Dean of School of Law at Kansas University and former president of Alpha Kappa Lambda, addressed the assembly and presented the charter in the absence of Dr. Ted F. Andrews, national president of the Fraternity. The ceremony was ended by a joint effort of all AKL's in singing "Hail our Fraternity."

Immediately following the ceremony, a reception was held in Social Hall. Here the parents of the members and all their friends were able to gather and meet.

Central Missouri State

Central Missouri State College, located in Warrensburg, Missouri, opened its doors May 10, 1871, as the State Normal School. It continued as a normal school until senior college status was effected in 1915. The school's present name was adopted in 1946.

The college now offers some 500 courses and has a teaching staff of more than 120 teachers. It follows the quarter plan, and has a student body of over 2000 students.

The school offers bachelor degrees in science, liberal arts, education, business administration, and music education, and the mas-



Lloyd Cowherd, chapter president; Dean F. J. Moreau, past National AKL President; and Lewis J. Bacon, AKL Executive Secretary, converse with Prof. Kenneth Markwell, chapter sponsor, at Sigma's installation.

ters degree in science of education. It also has pre-professional training for engineering, law, journalism, the ministry, nursing, medicine, dentistry, and others.

The town of Warrensburg is located approximately 50 miles southeast of Kansas City, Missouri, on the main line of the Missouri Pacific Railroad. It has a population of nearly 9000.

Beta Sigma Chi, the group that has now become Sigma chapter of AKL, was organized on February 8, 1956, by seven students who had found that none of the fraternities

(Continued on Page 16)



SIGMA. An installation dance was a feature of the ceremonies when Sigma received its charter. Here, a group of guests enjoy the festivities.



Sigma Chapter, 1956-57

Tau Chapter Installed

38-Year-Old Pennsylvania State Local Is Now Chapter of Alpha Kappa Lambda

The week end of April 27 saw Alpha Kappa Lambda pass another milestone in its course toward a greater future. On that day, an old, honored local fraternity at the Pennsylvania State University was chartered as Tau chapter of Alpha Kappa Lambda.

Significantly, the local, Sigma Phi Alpha, was the outgrowth of the Friends Student Hostel, and later Friends Union, which was founded at about the same time as Alpha Kappa Lambda emerged from a local group, Los Amigos, at the University of California.

The merger of Sigma Phi Alpha and AKL was the result of nearly two year's work by the collegiate chapter, its governing alumni board, and the AKL National Office. Each group thoroughly investigated the other; perhaps at no other time has such a complete inquiry been made between a local and national fraternity. All parties concerned were impressed by the parallel concepts, principles, and objectives of the two organizations.

A wonderful spirit prevailed throughout the week end's activities. Thirty Sigma Phi Alpha active members, and 23 alumni members, were initiated by an installation team made up of delegations from Mu chapter of Ohio

State, and Pi chapter of Millikin, local and nearby AKL alumni and national officers. Also, 33 additional alumni of Sigma Phi Alpha paid initiation fees in time to be listed as charter members and will be initiated at a later date.

SPA alumni have five years from the chartering date within which to be initiated. On Saturday afternoon, April 27, the undergraduate members were initiated. Some alumni were initiated that evening, and stragglers became brothers on Sunday morning.

Following the Sunday initiation, 80 AKL's attended a special breakfast in the State College Hotel. Dr. Ted F. Andrews, national AKL president, spoke informally to the group telling them that Tau chapter would be expected to play a major role in AKL in the years to come. Following breakfast, the group attended Chapel on campus to hear Dr. Samuel Proctor, president of the Virginia Union University, deliver a most interesting sermon entitled "The Inheritance of the Meek."

The beautiful Tau chapter house at 132 East Foster Ave. was the site for a buffet dinner given by the undergraduate chapter. At 3:00 p.m. the formal installation was held in the Mineral Science Auditorium. Brother Joseph Maloney, Kansas State '49, now living in New York, presided as master of ceremonies. The Sigma Phi Alpha quartet and octet furnished special music.

Officials of the Pennsylvania State University gave welcoming

WELCOME. Leslie Hoffman (right), president of Sigma Phi Alpha, extends the hand of fellowship to Lewis Bacon, thus welcoming AKL to the Penn. State campus.

comments, and then President Andrews addressed the gathering and presented the charter, listing 86 charter members.

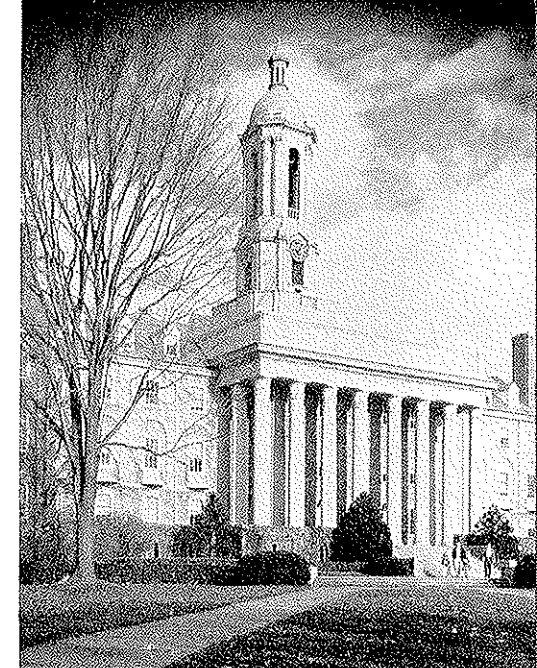
A unique but important factor contributing to the tremendous success of the chapter was the alumni enthusiasm, spirit, and organization, spurred by the SPA alumni board in Philadelphia. It was through the tireless effort of this board that the merger was approved and promoted.

Since Pennsylvania is new territory for Alpha Kappa Lambda, an aggressive organizational program is planned by the National Office for the immediate future. Field work will be conducted investigating possibilities for further expansion in the area, and alumni chapters are being planned for Philadelphia and Pittsburgh.

Pennsylvania State University

Chartered in 1855, as the Farmers' High School of Pennsylvania, the present Pennsylvania State University has had several name changes since it first opened its doors. For 79 years it was known as Pennsylvania State College; then in 1953, the name was changed to the one presently used.

A land-grant school, Penn State is the state's agricultural college. Its main campus is located at University Park, Pennsylvania, on a 3,727 acre tract, with approxi-

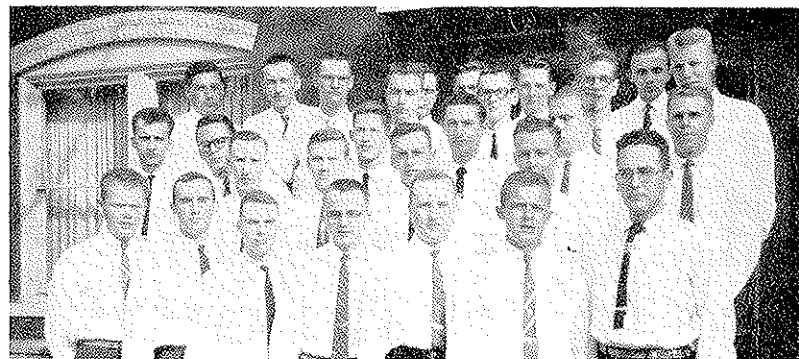


OLD MAIN. This beautiful building is a campus landmark at Penn. State. It houses the main administration offices.

mately 140 buildings. The school's annual operating budget is approximately \$29 million.

Student enrollment totals more than 16,000 students. This figure includes Penn State centers at 12 cities other than at University Park.

There are 52 fraternities located at Penn State, and 22 sororities.



Tau Chapter, 1956-57

Tau Chapter Has 38-year History

In 1919, a group of members of the Society of Friends living in Philadelphia and vicinity incorporated the Friends' Student Hostel, for the purpose of establishing a boarding club at Pennsylvania State College. It was hoped that it might serve as a home for students who were Friends, and as a center for their religious activity, since there was then no Meeting House in the town.

Yet there was to be no sectarian requirement for accommodation, simply a hope that there would be a congeniality of interest and ideals among the whole group, be they Friends or not.

A large double house on the corner of Beaver and Atherton Streets in State College was acquired and extensively remodeled to make room for about thirty students. The accomplishment of this program gave the initial group a useful project which served to cement them together as nothing else could have done. The original plan was to have a housemother as manager, but after six months this was abandoned, and the students were allowed to operate their own program.

The name, Friends' Union, was adopted by the group, as representing an association of friends

TAU. The handsome house of Tau chapter has served as home since 1944. Last year, it was completely redecorated.



which reached across the boundaries of sectarian interest to a real brotherhood of purpose. Arthur E. James was the first president, while Dean Sackett and later Prof. Gjesdahl served as advisers for the group.

In 1921, the group found that it met all requirements of the Intramural Council of local fraternities, and promptly joined to avail itself of the opportunities for athletics, social affairs, and the like. During the first 12 semesters, the Friends' Union won the scholarship cup six times.

With the successive graduation of several classes, there accumulated in the vicinity of Philadelphia a sufficiently large group of alumni to make feasible the organization of an active alumni association in 1924.

In 1930, the name Friends' Union was changed to Sigma Phi Alpha fraternity, and the group moved to a chapter house on Pugh Street. The constitution of the SPA fraternity retained the principles established by the founders of the Friends' Union. Though the depression made things difficult, the group grew and prospered.

In 1944 the present house on East Foster Avenue was purchased, and the Sigma Phi Alpha Corporation was organized as a land-holding body. Funds for the purchase were obtained by the sale of low interest bearing bonds to the alumni members. This house is now rented to the active chapter by the alumni corporation.

Last summer the chapter house was completely remodeled, with painting inside and out, with the building of a new stairway, the installation of a new oil furnace, and the replacing of the front porch with a stone patio, as well as extensive rewiring.

The chapter conducts a full program of activities, participating in the Interfraternity Council events and intramural games. Scholarship is stressed, and in recent semesters the group has ranked among the top eleven, out of 55 fraternities at Penn State.

Sigma Phi Alpha became acquainted with Alpha Kappa Lambda during the 1955-56 school year, when Lewis Bacon, AKL executive secretary, met with the chapter while on a visit to the Penn State campus. It was found that the two groups had similar practices and ideals, and the present merger is the natural outcome. Horace H. Pusey, Penn State '38, president of the SPA corporation, handled negotiations and arrangements for his group, while AKL was represented by Lewis Bacon, Frank Lenz, California '14, Arthur Weber, Kansas '27, and others.

Jim Smith, Illinois '52, and his family are back from Europe and living in Ft. Wayne, Indiana. He's with the Johnson Wax Company.

Charter Members, Tau Chapter

Adam, David M., Jr.	'56	Kroninger, Gerald G.	'57
Albert, Thomas F.	'59	Kurtz, Robert M., Jr.	'56
Bailey, Richard A.	'55	Kurtz, Charles T. III	'57
Barnard, Richard W.	'38	Linville, Lawrence W.	'49
Barton, Lewis	'27	Logan, Leobert L.	'28
Benner, Edgar F.	'35	Lutz, William E.	'30
Benson, David R.	'58	Mitchell, Donald G.	'57
Bissey, Luther T.	'34	Montgomery, Edwin H.	'52
Bixler, Harold R.	'57	Moon, Henry T.	'38
Botlock, Thomas	'59	Moore, Frank D. III	'58
Bove, Paul	'49	Moore, Samuel P.	'57
Boyles, James G.	'59	Pickering, John R.	'35
Brandt, Richard C.	'56	Pollock, Henry A.	'59
Brosius, Charles	'52	Pownall, Jay C.	'39
Bunnell, Fred	'31	Pusey, Horace H.	'38
Butt, William B.	'50	Pusey, Jesse D.	'25
Byrne, James G.	'57	Radcliff, Wayne K.	'59
Cherry, James L.	'28	Reilly, John K., Jr.	'57
Cohee, John A.	'49	Rhoads, George	'25
Deaver, William H.	'50	Robson, James F.	'59
Dezak, Allen A.	'58	Schuman, Robert P.	'57
Diehl, Chester F.	'38	Sealey, Harry G.	'25
Dubbs, Edward S., Jr.	'58	Sharpless, Edward S.	'40
Edgerton, R. Donald	'31	Shetzline, Raymond Y.	'37
Ellsworth, C. A.	'35	Shields, Ralph K.	'33
Farwell, Ray S., Jr.	'44	Siar, William J.	'58
Forbes, William	'59	Snyder, Eugene E.	'58
Forrest, John G.	'57	Stasch, Harold W.	'59
Francis, Ronald L.	'56	Stuard, Roger L.	'57
Frederick, Richard M.	'59	Styer, J. Franklin	'22
Gjesdahl, Maurice S.	Hon.	Sutherland, Donald B.	'59
Glaser, Charles A.	'29	Sword, Carl R.	'58
Gray, James C.	'52	Taylor, Robert N.	'59
Grupp, Fred W.	'26	Thompson, Kenneth A.	'58
Harhigh, George H.	'59	Thornquist, William A.	'57
Hibbs, Watson W.	'24	Toepfer, Robert W.	'56
Hoffman, Leslie E.	'57	Tyson, Donald C.	'26
Hood, Charles B.	'49	Van Gorder, Chester	'45
Hood, Lamartine	'24	Walton, Frank P.	'27
Johnson, J. Linwood	'25	Walton, Herbert B.	'28
Jones, Sherwood	'49	Waterstradt, Robert	'59
Kirk, Warren B.	'24	Wiant, Harold E.	'57
Kjelgaard, William	'50	Worthington, Robert M.	'41
Kreiser, Harold R.	'52	Yarnall, Martin B.	'49

Upsilon Is Newest Chapter

Colorado State College Chapter Organized Through Logos Foundation Scholarship Award

Months of waiting and weeks of work came to a climax May 11-12 as the men of Alpha Kappa Lambda Colony, Colorado State College, experienced one of the happiest events of their lives—that of seeing Upsilon chapter become reality.

The traditional running of the charter was a part of the many events carried out by the group to make this a truly memorable occasion.

The charter was flown to Denver via Continental Airlines and arrived at 2:10 p.m. May 11. Amidst much noise and fanfare from a band and the crowd present the marathon commenced. Instead of a torch being carried from Athens to Sparta, the charter of Upsilon chapter was carried from Stapleton airfield, Denver, to Greeley.

Steve Englert, a member of Upsilon chapter, started the charter on its way by carrying it the first

lap. Some forty members of Iota, Lambda, and the local organization, costumed like the Greeks of old, combined to run the charter some sixty miles in a relay fashion. A truck was used to deliver the runners to their relay point and cars were used to pick up those completing laps.

Runner after runner and mile after mile the marathon progressed at a rapid pace and arrived at its destination in four hours and forty minutes.

Pete Marta, Upsilon president, was the last to carry the charter and presented it to the National President, Dr. Ted Andrews, who, with several other dignitaries, was present to witness the arrival at the Garden Theater. The dignitaries included Mr. Lewis Bacon; Dr. William Ross, president of the college; Mayor Beck of Greeley; Dr. Allan Elliott, Dean of Men; Dr. Jack Shaw, Director of Student Personnel, and others.

Much help was given the group by the Denver and Greeley police in the form of escorts for the thin-clad runners and vehicle caravan. The entire event was covered by Life magazine, KOA, and the Denver press and others. Contests based on speculation of the time of arrival of the charter in Greeley were carried on by Columbine Bowling Alley and the Greeley Drive-In Theater.

Reigning over the festivities were Alpha Kappa Lambda "Sweetheart," Nancy Sutton, and her attendants. Also honored was Mrs. Hilda "Mom" Webster, house-mother of the Upsilon chapter. Many parents and relatives of the men were present for the affair. A president's reception in honor of

Dr. Andrews was held at 8:00 to end the day's excitement.

On Sunday the group had their initiation at 6:30 a.m. followed by breakfast at 8:30 and Church at 10:30. At 2:30 p.m. the public was invited to the charter presentation ceremonies which were held at the beautiful Garden Theater. Dr. Ted Andrews delivered the address and made the presentation of the charter. President Pete Marta made the acceptance for Upsilon chapter. Others taking part in the program were Dr. Ross, Dr. Elliott, Dr. Shaw, Rev. Frank Voth, and the "Grace Notes."

An open house followed the ceremonies for the "Hanging of the Charter" and a conclusion to the thrilling week end.

All the excitement, emotion, and glory combined to make this the most interesting event on campus spring quarter. Upsilon chapter deeply regretted that Don Colegrove, founder of the local organization, was unable to be present at the gala affair; but, our thanks go to him for his untiring help and effort in laying the cornerstone of Upsilon chapter.

Colorado State College

Colorado State College is one of the older institutions of higher learning in Colorado. Located at Greeley, it opened its doors in 1890.

Greeley was conceived in 1870 by Nathan C. Meeker, and the town planned, laid out, and settled by Meeker's Greeley Union Colony. When the colony was eighteen years old, a movement was started to establish a normal school to supply teachers for the community and state. When the school opened in 1890, it had five instructors and 96 students.

In 1935 the school's name was changed to Colorado State College of Education, and commencing in the fall of 1957, the name will be simply Colorado State College.



Upsilon Chapter, 1956-57

There are now about five hundred courses offered, and a teaching staff of 150. The student body numbers about 2800 students.

The school offers the bachelor of arts degree, the master of arts degree, and the doctor of education degree.

The city of Greeley is in northern Colorado, 52 miles north of Denver. Estes Park is 51 miles west. The city has a population of over 20,000.

The Los Amigos Club, which has now become Upsilon chapter of AKL, had its origin in November, 1955, when a group of friends banded together under the impetus of Donald Colegrove, Logos Foundation scholarship winner from Ohio State University. Throughout the remainder of that first year, the AKL men were busy in all campus activities, including the All-Greek Songfest. The group was quickly recognized by the Interfraternity Council.

(Continued on Page 16)

CHARTER. President Pete Marta of Upsilon proudly displays the charter, as Dr. Ted F. Andrews, National AKL President; Lewis Bacon, AKL Executive Secretary; and Harold Anderson, faculty sponsor, smile approval.



THE LOGOS FOUNDATION ANNOUNCES

Scholarships

With the funds that have been contributed to The Logos Foundation, the Foundation Board is pleased to announce the following scholarship, which goes to an active member of AKL who transfers to a new school to take the lead in establishing a new chapter of the fraternity. The scholarship has been awarded for the 1957-58 school year:

IOWA STATE COLLEGE Ames, Iowa

Allan C. Van Noy, of Oakland, California, an active member of Alpha Chapter, has been chosen from a field of six applicants for the Logos Foundation scholarship to Iowa State College. "Al" will be a junior in business administration. At the University of California, he has served on the I.F.C., on the class officers board, as president of a church youth group, and as a yell leader. He has also held down a part-time job.



Allan Van Noy

This scholarship is the fifth provided by The Logos Foundation since the fund's formation four years ago. Al will follow the pattern of former scholarship winners, Gary Haxton, Don Colegrove, Jack Austin, and Robert Haigh. These men were instrumental in the formation of Rho, Upsilon, Phi, and Omicron chapters, respectively.

UPSILON CHAPTER

(Continued from Page 15)

During the 1956-57 school year, the Los Amigos Club arranged for a chapter house adjacent to the campus, won first prize for homecoming decorations, and had a full social calendar. It has been an outstanding group from the beginning.

SIGMA INSTALLATION

(Continued from Page 9)

already on the campus suited their particular needs and ideals. Contact was made with Lewis Bacon, AKL's executive secretary, and Beta Sigma Chi presented its application for a charter to the 18th National Conclave, held at Purdue, in September, 1956.

The group has had an active life since its inception. Last fall, the

men won first prize in the homecoming float parade. The men have also participated in the All-Greek song fete, rushing, and the campus social whirl.

There are now five national social sororities and five national social fraternities on the Central Missouri State College campus.

AKL's ATTEND CHURCH

AKL members averaged attending church nearly three times out of four, according to the annual reports of active members for the 1956-57 school year. Based on four Sundays per month, the average AKL undergraduate attended church 2.95 times per month. One chapter carried a 4.0 average, while the low chapter averaged .77 times per month.

Upsilon Inaugurates Service Project

The men of the new Upsilon chapter of AKL, at Colorado State College, adopted a worthy and novel project for the community service this past year—they helped organize a training program for Boy Scouts.

A common problem with Scouting is the bringing of the Scouts to or near the Eagle rank. It has been the general experience that if a boy is not an Eagle Scout, or



Community service plans are discussed by (left to right) Pete Marta and Donald Fox of AKL, Lt. Earl Touning of the Greeley Police Department, troop sponsors; Ronnie Brunner, senior patrol leader; and Norman Roe, scoutmaster of Troop 205.

nearly so, by the time he enters high school, he is apt to lose interest in the Scouting program.

Troop No. 205 in Greeley had such a problem. Approximately 50% of the troop members will enter high school in the fall, but none were over the Star rank. And then, the AKL men came to the rescue.

The chapter was divided into two groups of instructors, and inaugurated a program that worked like this: The first group met with two scouts for two hours a week and were concerned with aiding the Scouts to earn merit badges as rapidly as possible. The second group of members are the specialists, skilled in fields such as photography, meteorology, forestry, etc. Whenever the first group needed help on a particular merit

badge, a specialist from the second group gave assistance.

The results of the program proved quite successful, much to the satisfaction of Norman Roe, the Scoutmaster, and the Greeley Police force, troop sponsors. The training schedule may be undertaken again next year.

BACON PLANS WESTERN TRIP

Lewis Bacon, AKL Executive Secretary, will launch early his travel program for the 1957-58 school year. West Coast chapters will find him meeting with them in September and October.

The following itinerary has been set up on a tentative basis:

- Sept. 20-23—Theta—Seattle, Washington.
- Sept. 24-26—Eta—Pullman, Washington.
- Sept. 27—Portland, Oregon.
- Sept. 28-30—AKL Club—Corvallis, Oregon.
- Sept. 30-Oct. 2—Beta—Palo Alto, California.
- Oct. 3-5—Alpha—Berkeley, California.
- Oct. 5-9—Omicron—Stockton, California.

Bacon will attend the National Interfraternity Conference as official delegate at the Broadmoor Hotel, Colorado Springs, Colorado, during November 28-30 and will visit Upsilon chapter at Colorado State College in Greeley immediately following the N.I.C. event. He plans to visit chapters east of Kansas during the second semester of the school year.

Dr. Edward D. Campbell, Illinois '36, has lived in Cape Girardeau, Missouri, since 1945. There are four children in his family: Eddie Jr., 15; Susan, 13; Sally, 8, and Sandra, 1. They live at 1100 N. Henderson, Cape Girardeau.

Theta Chapter Forms Non-Profit Group

An organizational meeting of the Alpha Kappa Lambda Christian Foundation, a non-profit corporation was held on the 11th day of May, 1957, following a Founders' Day Banquet of the Seattle chapter of Alpha Kappa Lambda at the Theta chapter house in Seattle, Washington. Forty-nine people were present, including alumni and wives, actives and parents of actives, and guests invited by Brother W. B. Saunders, president of the Theta Alumni Board.

A report of progress of Theta chapter for the 1956-57 year given by Andy LeCocq, president of Theta, was followed by an address by Mike Martin of Kings Garden.

Brother Alec Duff outlined the technical aspects of forming a corporation under the religious, charitable and educational statutes which enable contributors to claim income tax deductions and also enable the corporation, by taking a second mortgage against assets of the active chapter, to insure that the chapter always adheres to the ideals of the Fraternity. It was stated that anyone who pledged \$50.00 prior to August 15, 1957, would be considered a charter member of the Foundation and such person's name would be signed for him in the event that he was not able to be present; that no one would run any financial risk by such procedure.

Duff stated that the corporation would be broad enough to cover any number of charitable or religious purposes, but that there was no reason why the same organization could not be used for Eta chapter at Washington State at a later date. Pledges to the new foundation totalled \$635.00, in addition to the \$560.00 already collected and used for a down payment on the chapter house at 1804

E. 50th Avenue in Seattle.

Board of Directors of the Foundation were elected as follows: William B. Saunders, President, Washington '30; Donald K. Reynolds, Stanford '41; Frank LeCocq (father of the chapter president), Vice-president; Paul Hungerford, Washington State '27; Gustov Bliesner, Washington State '33; Rev. J. Robert Walters; Judge James E. A. Burns; Ernest Sheeley, Washington '32; Floyd Weldon; Alec Duff, Secretary-Treasurer, Washington '30; Mike Martin.

Judge James E. A. Burns moved that a goal of \$5,000 be set and the goal was adopted. It has been explained by Brother Duff that the new foundation is not restricted to members of Alpha Kappa Lambda and an active effort will be made to find additional non-AKL interest in the Foundation. Contributions can be mailed to Mr. Alec Duff, Attorney at Law, 1158 Dexter Horton Bldg., Seattle 4, Wash.

Captain John Rockie, Washington State '43, is currently assistant professor of air science at the University of Wyoming. He and his wife Dodie have three children: Carol, Johnny, and David.

William S. Noel, California '42, has been transferred to the Linden, New Jersey, offices of Rheem Manufacturing Company as industrial relations manager for seven plants in the container division. His address is 105 New England Avenue, Apt. 41, Summit, N. J.

Irving Dilliard, Illinois '27, editor of the editorial page of the St. Louis *Post Dispatch*, was made a chevalier of the Legion of Honor by the French government on June 7, 1957.

Curtis D. Sides, Kansas State '32, is principal of Labette County Community High School and Trade School. The faculty of 36 and student body of 707 now have four buildings with three more in prospect at a cost of 1½ million dollars.

Pi, Xi Chapters Win National Awards

When all the facts and figures for the 1956-57 school year had been tabulated by the fraternity's national office, Pi chapter of Millikin University, and Xi chapter of Northeast Missouri State Teachers College, were on top of the heap as winners of the AKL national awards.

Pi chapter, in its second year of operation as a chapter of Alpha Kappa Lambda, walked away with honors in competition for the National Achievement Award. In second place was Lambda chapter of Kansas State Teachers College, while Gamma chapter of Illinois was third, and Omicron chapter of College of the Pacific ranked fourth.

Previous winners of the National Award have been: 1955-56, Xi chapter; 1954-55, Lambda chapter; 1953-54, Gamma chapter; 1952-53, Eta chapter; 1951-52, Eta chapter.

The achievement award is given to the chapter which accumulates the greatest number of points towards the trophy, with the points being based on the annual reports of the active members. Each active member reports on his activities in five fields: organized Christian work, scholarship, campus activities, loyalty to AKL, and self-support.

It is interesting to note that in this year's competition, Pi chapter outscored Theta of Washington in religious activity. Theta had held that position for several years, but now has a worthy competitor in that category.

Scholarship Award

Xi chapter, winner of the Scholarship Award, had to come from behind to get past Beta chapter of Stanford and Gamma chapter of Illinois. In recent years, Beta and Gamma have exchanged the trophy, but pretty well kept it with these chapters only. Now a new-

comer takes over. Xi's winning mark was 4.76 (out of a possible perfect 6.0), with Beta in second place with 4.62, and Gamma and Omicron of College of the Pacific tied for third with 4.58. Delta of Kansas and Eta of Washington State tied for fifth with 4.55.

The National Scholarship Award is a traveling trophy, which now moves from Gamma to Xi. Because of delays in receiving the National Interfraternity Council Scholarship reports, the awarding of the trophy is always a year late. Thus, this year's award is based on figures for the 1955-56 school year.

George S. Hamilton, Purdue '56, was married in September, 1956, at Quantico Marine Base. He writes he is hoping for West Coast duty after finishing basic officer's training with the Marine Corps.

Harold E. Ahlstedt, Kansas '34, is employed by the Federal Power Commission, Chicago Region Office. He and his wife Berta have a daughter, Jo Lou, 13. The family lives at 2601 Elder Lane, Franklin Park, Illinois.

Bob T. Chapin, Kansas State '50, opened a new firm, Chapin & Associates, Landscape Architects and City Planners, in Baton Rouge, Louisiana. Bob is a member of the American Society of Landscape Architects. His address is 913 Aster, Baton Rouge.

William C. Morrison, California '21, retired from his position at Beverly Hills High School on account of two coronary attacks. His address is 10411 Quito Lane, Los Angeles 24.

Frank A. Timmers, California '48, reports the birth of his third daughter, Cindy, in September, 1956. The family lives at 1222 Everett St., El Cerrito, California.

Lloyd E. McCleary, Illinois '46, received his Ph.D. degree from the University of Illinois in February, 1957, and is now assistant to the Superintendent of Evanston Township High School. He and his wife Marcella and two daughters, Karen Ann and Joan, live at 1935 Lake Street, Evanston, Illinois.

Richard E. Tesche, Kansas State '51, is now in the wholesale nursery business with his father. He was released from the Air Force in September, 1956, and is living at 9104 W. 69 Terr., Merriam, Kansas.

Myron Leitz, Washington State '54, and his wife are the parents of a daughter, Ellen Louise, born January 13, 1957. Their home is in Rosalia, Washington.

Donald Sharp, Stanford '44, recently returned to New York after spending two years working in Paris as engineer in charge of a refinery design project for the French affiliate of California Texas Oil Co., Ltd.

James L. Van Deusen, Illinois '19, is a maintenance engineer in

the Illinois Highway Department. His address is 312 W. Clark Ave., Effingham, Illinois.

Max McG. Warner, Ohio State '52, is president of the Ace Drilling Co. and lives in Columbus, Ohio.

Pierre Ory, Kansas Honorary '55, is a 2nd lieutenant in the French Army. He writes from his post in Algiers that he hopes to return to the United States after completing army service.

Charles F. Richey, Illinois '46, is in his fifth year as pastor of the Presbyterian Church at Milford, Michigan. After two years in research, study, and industry as a chemical engineer, he attended Princeton Seminary to prepare himself for the ministry. There he met and married his wife Carolyn, a Michigan State graduate, and they now have three children, Mark 5, Peter 3, and Jane 2. The Richey's address is 536 E. Liberty St., Milford, Michigan.

Neil E. Carpenter, Purdue '53, returned to civilian life after serving with the army in Japan and has been teaching speech and

hearing therapy in Valparaiso City Schools. His address is Cottage Inn Trailer Pk., R.R. 3, Valparaiso, Indiana.

Theodore Beckmeyer, Washington '50, is now working on a doctor of education degree at Columbia University Teachers College, New York. One part of his program includes a course of training to prepare for teaching the deaf, with the over-all program being preparation for administration of special education institutions or programs. He received the M.Ed. degree in August, 1956, from the University of Washington.

Robert A. Wilson, Purdue '54, is now employed by North American Aviation, Inc., Guided Missile Division, Downey, California. After graduation he served two years with the Military Assistance Advisory Group on Formosa.

Claude L. King, Kansas State '32, is Extension Plant Pathologist for Kansas State College. He and his wife Beatrice have two children, Claudia, 13, and Douglas, 10. The family lives at 309 Valley Drive, Manhattan, Kansas.

Myron Sielaff, Illinois '48, married Lana Waltz, a graduate of Milwaukee Downer College, in September, 1955. They have a son, Michel Witte, born August 7, 1956. The Sielaffs live at 8013 N. Santa Monica Blvd., Milwaukee 17, Wisc.

Morey Aids State

Dr. Lloyd Morey, Illinois Honorary, returned to his home in Urbana, Illinois, on June 30, having completed his services to the State of Illinois in the office of the State Auditor of Public Accounts.

Dr. Morey, who is President Emeritus of the University of Illinois, served as State Auditor of Public Accounts from July, 1956, until January, 1957, following the resignation of Orville Hodge. Since January he has served as consultant to the newly elected Auditor, Elbert S. Smith, and adviser on legislation to improve the fiscal organization of the state.

He was co-author with Albert B. Jenner, Jr., of a plan for a complete reorganization of Illinois finances, most of which was enacted by the Illinois General Assembly in its recent session.

Bruce W. Gilbert, Illinois '52, has been working as an engineer with Northern Illinois Gas Company since returning from Korean service with the Army Engineers.

Robert K. Duncan, Purdue '41, received his degree from the Chase School of Law in May, 1957. He was president of the senior class and worked in the acoustics laboratory of the Baldwin Piano Company.

IOTA CHAPTER. Completed in April, the beautiful and spacious new chapter house of Iota chapter at Kansas State College, is shown here in a composite photograph. It will house 60 men, and was built at a cost of over \$170,000. The dormitory section is at far left, the living and dining rooms at the right, and the house-mother's quarters in the center. Study rooms are at the rear.



Ross Makes Ascent

Lt. Comdr. Malcolm D. Ross, Purdue '41, was one of two naval officers who made a balloon flight to an altitude of 14 miles, on November 8, 1956. As part of the STRATOLAB series of experiments, Ross and Lt. Comdr. M. L. Lewis, USN, made the ascent attached to a plastic balloon.

The vehicle reached an altitude of 76,000 feet, to set an unofficial altitude record for a manned balloon flight. The official and world record was set in 1935 at a height of 72,395 feet.

Purpose of the ascent was to test the feasibility and workability of equipment which will now be used for manned space laboratories at lower levels.

Ross graduated from Purdue in 1941, and did postgraduate work at the University of Chicago, receiving a meteorological certificate from that institution. After graduation he was sports announcer for Radio Station WHBU until 1942. He was commissioned in the Navy in 1943 and served at the Fleet Weather Central in Pearl Harbor and aboard the USS Saratoga.

After the war, Ross operated his own advertising agency in Pasadena, California, until recalled to active duty in 1950. He has been in the Navy ever since, and in 1951 began his work with balloons.

Comdr. Ross lives with his wife Marjorie and his daughter June at 4441 19th Street, Arlington, Va.

Calvin O. Evans, Kansas '29, is chairman of the division of student personnel services of the Milwaukee Vocational and Adult schools. His address is 3375 N. 49th Street, Milwaukee, Wisconsin.

Donald S. Wheeler, Michigan '25, is principal of Eastern High School, Lansing, Michigan. He is the immediate past president of the Lansing Kiwanis Club and is currently

president of the Michigan Secondary School Association. He and his wife, Olive, have two daughters, both Michigan State graduates.

Winton J. Ewing, Emporia '53, was married January 30, 1957 to Suzette Standerwick. Their address is 358 Commonwealth Ave., Boston 15, Massachusetts.

Jerry A. Friesen, Kansas State '55, is a Lt. in the Air Force, stationed at Travis AFB. He is a co-pilot, flying C-124's to Hawaii and Japan. He and his wife, Donna, can be addressed at Monta Vista Courts, Box 390, R-1, Apt. B, Vacaville, California.

Roy L. Fox, Kansas State '31, continuing as meteorologist in charge, Pacific Area, of the U.S. Weather Bureau in Honolulu, has just returned from an extensive inspection trip of Weather Bureau Stations in the western tropical Pacific. He visited Majuro in the Marshall Islands, Ponape, Truk, Yap, Koror in the Caroline Islands, and Guam. His address is 186 Kailua Road, Lanikai, Hawaii.

Clarence M. Dial, Washington State '50, is music director in the Brookings-Harbor, Oregon, High School, teaching instrumental and vocal music.

Dr. John M. Harter, Stanford '44, is a practicing neurologist and psychiatrist. His office is Suite 2600, 450 Sutter Street, San Francisco, California.

John M. Glendenning, Kansas '25, reports he still lives in beautiful Minnesota, state of 16,000 lakes at last count. He is rehabilitation coordinator at Glen Lake Sanatorium, Oak Terrace. As vice president of the Minnesota Rehabilitation Association he is actively pushing legislation to increase employment of handicapped people.

Ira Daniel, Washington State '43, has been actively farming for the past fourteen years. He and his wife have four children—Colleen, Roger, Dale and Darlene.

James P. Spresser, Ohio State '52, accepted a permanent position as facilities engineer with General Electric Company's Foundry Department at Erie after completing a three year manufacturing training program in December, 1956. His address is Apt. 1, 3807 Briggs Ave., Erie, Pennsylvania.

Earl E. Troeger, Jr., Purdue '52, is a partner in Andrew Troeger & Co., sheet metal contractors, and lives in South Bend, Indiana.

Benjamin B. Southworth, Michigan '29, is a captain for Trans World Airlines, flying the Philadelphia - Los Angeles non-stop route. He has been with TWA for twenty years and makes his home at 4048 Via Solano, Palos Verdes Estates, California.

Brownell W. Landes, Kansas '49, is an assistant senior production design engineer with Bendix Aviation Corporation in Kansas City. His family, including Sharon Kay, 4, and Bruce Wayne, 2, moved into a new home last December. Their address is 700 W. 96th, Kansas City 14, Missouri.

Donald L. Shuman, Illinois '49, reports four future AKL's in his family: Bruce, 6, Roger, 4, David, 2, and Keith, 1. No girls.

Charles R. Zimmerman, Washington State '41, completed his 11th season as conductor of the Portland Symphonic Choir, a 200 voice group which does and has done most of the great works in choral literature. His wife Janice and he have four children, the oldest a freshman in high school and the youngest in kindergarten.

Robert G. Linville, Stanford '44, is sales training director for Boise Payette Lumber Company, operating in Idaho, Oregon, Utah, Wyoming, and Colorado. He and his wife have three sons: Tom 5, Bob 4, and Dick 2. The family lives at 2512 El Rancho Drive, Boise, Idaho.

Robert E. Fisher, Michigan '41, is now living in Florida and has

Mesch On Council

Harold C. Mesch, Kansas '26, this year was elected to the board of directors of the New York Safety Council. He had previously served as general chairman of its 1955 convention.

Mesch is in business in East Orange, New Jersey, and is a partner in the Guardian Safety Equipment Company. Born in St. Louis, he received a degree from the University of Kansas in civil engineering and immediately began a career in safety engineering. He has served as chief safety engineer for the Soil Conservation Service in the Department of Agriculture, Washington, D. C., and also as Administrator of the Industrial Safety Equipment and Sun-Glass Industries for the War Production Board, this latter during World War II.

Harold and his wife live on River Road, East Hanover, New Jersey. He has one married daughter and a son who will soon enter medical school. He is a member of the Veterans of Safety and of the Safety Executive Club. His leisure time is devoted to his hobbies, which include gold, photography, and gardening. Harold is presently serving as secretary of the New York AKL Alumni chapter.

charge of the curtain wall division of Ware Aluminum Windows in Miami. His address is 998 N. Royal Poinciana Blvd., Miami Springs, Florida.

Carl E. Nuzman, Kansas State '53, is now an engineer for the Division of Water Resources, Kansas State Board of Agriculture, Topeka, Kansas. He was released from the Air Force in August, 1956.

Lowell Hambrie, California '23, is with the U.S. State Department. His address is USOM Iran, APO 205, New York.

Coulter Has Award

Dr. John Wesley Coulter, California '18, has received a Fulbright award for study in France during the 1957-58 school year, it was announced recently. Dr. Coulter is professor of geography at the University of Cincinnati and is an internationally-recognized authority on the human geography of the Pacific Island area.

Dr. Coulter will lecture on the Pacific at the University of Bordeaux and will do research in the literature of France's colonies in the Pacific. Mrs. Coulter and their three children will accompany him to France.

William D. Gulban, Purdue '50, has accepted a position as work standards and methods engineer for Packard Electric Division of General Motors Corporation in Warren, Ohio.

Harold L. Koeller, Illinois '30, helped negotiate a 98.3 million dollar P.L. agreement for sale of wheat, cotton, lard, edible oils, and tallow to Yugoslavia. Since June of 1956 he has been in Belgrade as agricultural attaché. His address is Belgrade—Agricultural Attache, Department of State, Washington 25, D. C.

2nd Lt. Thomas E. Ricky, Kansas '55, is taking basic jet pilot training at Laredo Air Force Base, Texas. His address is O.M.S. Box 567, Class 57-P, Laredo Air Force Base.

James G. Stevenson, Millikin '56, is district executive for the Portage Trails Council, Boy Scouts of America, serving Livingston County, Michigan. His address is 106 S. Main Street, Ann Arbor.

Eugene L. Cady, Illinois '48, works as sales manager of an acoustical contracting firm in Milwaukee, Wisconsin. He and his wife have three daughters, aged 6, 3, and 1. Their address is 4865 N. Anita Avenue, Milwaukee, Wisconsin.

Glenn H. McIntyre, Stanford '24, is chairman of the board and active in the management of National Spectrographic Laboratories, Inc., a firm specializing in the manufacture and sale of emission spectrographic equipment, research, and analytical services. His home address is 1350 Inglewood Drive, Cleveland 21, Ohio.

Forrest C. Orr, Illinois '43, is chief clinical psychologist at Mendota State Hospital, Madison, Wisconsin. He completed his Ph.D. in psychology in June, 1955.

B. L. Chalender, Kansas State '50, acts as assistant principal at Horace Mann Intermediate in Wichita, Kansas. His home address is 1214 North KoKomo, Derby, Kansas.

Mark I. Baldwin, Kansas State '51, is a design engineer with Cessna Aircraft Company in Wichita. He was discharged from the Air Force last December. His address is 9711 West Murdock Ave., Wichita, Kansas.

McCleary to Bolivia

Rev. Paul McCleary, Illinois '52, has accepted a missionary assignment from the Methodist Church, and will spend four years and perhaps eight years, in service in Bolivia. Before leaving for Bolivia, he and his wife had language studies for nine months in San Jose, Costa Rica.

Rev. McCleary received his bachelor of divinity degree from Garrett Biblical Institute, Evanston, in 1956, after having served for 3 years as pastor of the Reddick and Essex Methodist Churches and for 3 years as pastor of the McDowell Methodist Church, all in Illinois.

While Paul took undergraduate work at the University of Illinois, he received his degree from Olivet Nazarene College, Bourbonnais, Illinois. He and his wife have three children, Leslie, Mary, and John.

THE LOGOS

Report from National

AKL's hat is off to our four new collegiate chapters featured in this issue! The chartering of these fine chapters represents a tremendous amount of work and faith by a large number of men.

To all the men working with expansion in Alpha Kappa Lambda (the charter members, charter alumni, National Executive Council members, Logos Foundation workers, Deans, and the many, many brothers in AKL who have contributed time, effort and money), the present growth shown by our young Fraternity is only a start to greater things ahead! This is not too optimistic an attitude since it appears for the first time in the history of AKL that we are at last making preparations for an era that will make the record-shattering post-World War II fraternity prosperity days look small.

Conservative estimates by most colleges and universities show enrollments doubling during the next fifteen years. New dormitories are being built, but they will handle only a small per cent of the great influx. To help colleges and universities keep control, more and more administrations are calling on the fraternity system for additional chapters.

The hands of many of the large national fraternities are tied since they already have chapters on most of the large fraternity campuses. The burden of keeping the fraternity system at pace with the huge enrollments falls on the smaller nationals. Alpha Kappa Lambda is assuming leadership in this program. Within a few years, we will be able to receive authorization to establish a chapter on almost any university campus in the United States where fraternities are now operating.

What we do with the opportunity ahead is up to us. We can fall back to our previous conservative attitude, or we can rapidly build facilities to handle additional chapters. Within two years, the Logos Foundation may be ineffective because of lack of funds. Contributions of \$2,000.00 a year provide only a few scholarships. We must find additional brothers to give to this fund, and we must solicit endowments to swell this fund to a minimum of \$5,000.00 a year.

The undergraduates at the 18th Conclave held last year at Purdue University realized that additional money is needed if we are to continue our progressive program. They raised their own monthly dues and initiation fees.

The program for subscriptions to THE LOGOS provided over \$1,000.00, yet the income figure for this project should be at least \$2,000.00.

Somehow, the National Executive Council must find ways to secure additional funds! The solution seems to be in numbers . . . through our alumni, possibly through voluntary alumni dues or subscriptions of some sort. The answer might be a package plan that would provide THE LOGOS, a monthly bulletin of expansion activities, and a membership plan to the 3,000 alumni in exchange for voluntary dues of \$5.00 each year.

I feel confident that whatever the National Executive Council decides at their meeting in Los Angeles in late August, Alpha Kappa Lambda will find itself in a better position to move ahead. Opportunities of building Alpha Kappa Lambda into a strong national movement are just ahead. What do you suggest?

Lewis Bacon
Executive Secretary

NEWS of the Collegiate Chapters

Alpha

CALIFORNIA

The 1957 spring semester has just drawn to a close here at Alpha, and the brothers are now enjoying the luxuries of summer living—and working. As we look back on the semester it appears to have been one of the best of recent years, socially, scholastically, and activity-wise.

On the social scene the spring formal at Mira Vista Country Club was a great success, as was our pledge dance at the La Honda Bowl, the latter with a "gangster" theme. Numerous exchanges with the beloved sororities and several pinnings kept the members in good singing voice.

Alpha participated in the annual Spring Sing at the Berkeley Community Theater and we managed to pull a second place in the Men's Division, singing "Shoeless Joe from Hannibal Mo." and "Heart" from "Damn Yankees."

Intramurally, this was another banner year for Alpha. For the 9th straight year we placed within the top ten fraternities from a field of 48, placing fourth in the over-all standings. Especially rugged were our basketball, football, bowling, tennis, and golf teams.

At the same time, Alpha men were well represented in University athletics. Warren Lavorel, playing first base on the Cal horsehide team, helped the Bears win the NCAA Baseball Crown. "Lav" was recently signed by the New York Yankees and is expected to have a good baseball future ahead

of him. On the Cal crew two AKL's were in the first boat, Frank Stevenson and "Papa" Dick Howard, who just became the father of a bouncing baby boy. In rugby AKL had three men on the J.V. squad: Karl Droese, Fred Snyder, and Hardy Dunn. Don Pimley continued to play good tennis for the Cal tennis team, and Don Nelson was a mainstay for the gymnastics squad.

In the campus activity field AKL's were busy as usual. Bill Petrocelli was a member of Golden Bear, men's activity honor society, and he also was a member of the IFC Judicial Committee. Dick Murley was unanimously re-elected Treasurer of Interfraternity Honor Society, and Jim Dougharty, Bill Petrocelli, Neal Petersen, and Bob Field were active in the organization. Buzz Summers continued his work on The Californians, campus spirit society. Finally, Neal Petersen was elected Vice-President of the IFC House Managers Council.

The scholastic highlight of the year was the election of Ron Bean into Phi Beta Kappa. Ron, a pre-med student, was one of the few Juniors so honored. It is hoped that the House grade point average will be higher this year than previously.

Next year promises to be a good one too, and Bob Lafferty, our Rushing Chairman, is hard at work to secure another fine crop of AKL pledges.

—Neal L. Petersen

Beta

STANFORD

Beta Chapter this past year assumed a position of leadership and responsibility in many phases of campus, community, and athletic

activities. AKL's were in evidence in pursuits that ranged from Rally Committee to the Symphony Forum and including the Chaparral,

the Hammer and Coffin Society, ASSU Legislature, Men's Council, and many class activities.

Social activities amounted to approximately a party every other week. One of the highlights of the winter quarter was a treasure hunt that consisted of nine separate clues covering an area with a six-mile radius. There were also the Interfraternity dance at the Surf Club in San Francisco, the spring overnight in the Santa Cruz Mountains, a beach party with Omicron Chapter of AKL from College of the Pacific, and others. We even had a party to burn our house plans and confer last rites on our dream house.

The discard of our house plans came about by a change in the Stanford University housing policy. On March 1, it was announced that all undergraduate men are eventually to be housed on the campus. The school will build new housing in multiple units of four, with common kitchen and fifty men per unit. Thereafter, the fraternities will occupy various units of the multiple buildings. AKL hopes to be one of the first to move into the new residences.

Rush week took place the first two weeks of winter quarter. Beta came up with 16 new men, with fourteen of them Freshmen. We think it's a fine class.

Gamma

ILLINOIS

This year Gamma Chapter ranked third in combined scholarship. The pledges were second, and the actives fifteenth.

The annual Founders' Day banquet was held at the chapter house on April 24. Also, campus Mother's Day was May 3-5. A large turnout of mothers was here for the week end. Our banquet was held Sunday noon, with a musicale after dinner.

This is the first time for a number of years that Gamma Chapter did not make Sachem try-outs, our

annual Greek sing in the spring. Next year we really hope to get the ball rolling again and come out with another first place.

The Spring Formal was on May 11 and was held at the chapter house. Then on May 18, Tri-State Day was held at Gamma, with 35 members from Ohio State, Purdue, and Millikin attending. There were group discussions in the morning and several sports tournaments in the afternoon. The banquet was held Saturday evening.

—Fred Kurth

Delta

KANSAS

Delta Chapter of AKL started the year considerably higher on Mount Oread by moving into a new house on the top of the hill at 1144 Louisiana. The advantages of our new house were soon evident as we found even stronger unity when all the brothers were under one roof. We are also closer to the campus and our enthusiasm for our new location is strengthened each time we watch the Freshman women walk by our house as they go to and from classes.

Pinnings and pinning parties occurred most frequently this year as Bob Cross, Jack Havenhill,



Delta's championship bowling team



Delta's Sandbar Party

Gary Bean, Don Barrett, Justin Cash, A. V. Morgan, Don Rowland, Dave Edwards, and Dave Zerfas all participated in the transferring of fraternity pins. Dave Zerfas followed through somewhat later with a diamond for Miss Connie Rambat.

Another highlight for Delta this year was the second winning of the Founders' Day Trophy awarded by the Wichita Alumni Chapter. Our annual Delta Day banquet featured John Ise, professor emeritus of economics, who spoke about campus life at the University of Kansas while he was attending school here.

Delta's most successful intramural team was its bowling team. They placed first in their league each semester and came in first

and second as university champions during the spring and fall semesters, respectively.

On April 6, Delta Chapter left for Warrensburg, Missouri, where they initiated the members of Sigma Chapter at Central Missouri State College.

Many Delta AKL's received honors during the year. Warren Gay was elected to Sachem, Senior men's honor society, as well as Tau Beta Pi and Phi Lambda Upsilon. Justin Cash was named outstanding Senior Cadet, and David Zerfas was honored as a distinguished military graduate. Neil Nelson and John Curry were elected to Pi Tau Sigma, honorary mechanical engineering fraternity, and Glenn McMahon to Psi Chi, honorary psychology fraternity.

Eta

WASHINGTON STATE

The members of Eta returned this past fall to a new home after spending a year in college housing. The new house was a recently purchased apartment house which is another big step for Eta toward a new dream house. The members quickly began work on remodeling the house and planning a rush program. The end result was a very comfortable fraternity house and a doubling of membership.

The house social highlights of the year were the hayride, Pledge Dance, Spring Semi-formal, and Spring picnic. For the Spring Semi-formal we decorated the house with daffodils and secured

one of the top campus bands. It turned out one of the best dances the house held in the last few years.

Two weddings are scheduled for the summer: Ernie Preedy to Janice MacQuarrie and Dave Stephenson to Janet Jewsbury. Wendell Love pinned Carol Armitage. Congratulations, men.

On March 3 four men were formally initiated and soon will be Eta's leaders. Our big community project for the year was held the Saturday before initiation with some 60 man-hours used in cleaning a local church.

During the past year we entered

ETA. Five brothers enjoy the cooling effects of a real dousing, at the chapter's annual water fight.



many of the campus activities and intramurals. Though we came in second in our intramural competition, no team could compete with the AKL spirit.

The chapter officers elected in March are Hal Tye, president; Cliff Tye, vice-president; Frank Leitz, house manager; Bill Reese, assistant house manager, and Neal Brown, recording and corresponding secretary.

Honors came to several Eta members during the year. Wendell

Love was elected to Sigma Tau (engineering) and Tau Beta Pi (engineering), as well as to Phi Kappa Phi, scholastic honorary. Frank Leitz was named to Scabbard and Blade, and also to Alpha Zeta (agriculture) and to Sigma Tau (engineering). Dave Stephenson was elected member of Phi Mu Alpha Sinfonia (music).

Theta

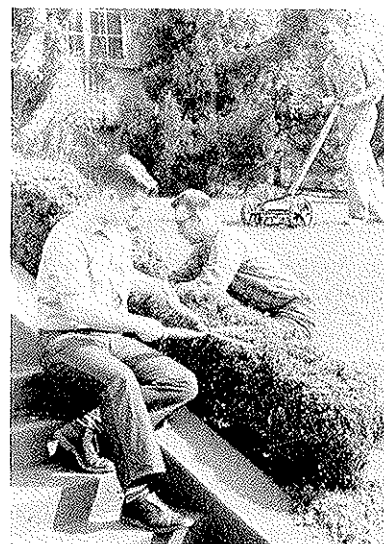
WASHINGTON

The spring quarter at Theta saw quite a few changes and improve-

ments. Number one of these was the formal signing of a contract to buy the present house we now occupy and to start payments next fall. Both collegiate and alumni members have shown renewed interest and things are moving along smoothly for about the first time this school year.

This quarter we pledged seven new men. They are Ned Clark, Mike Bridgham, Ed Tolstrup, Walter Westmoreland, Dick Rehbock, Ivan Bufinton, and Charles O'Malley. We think we have an excellent pledge class and are expecting great things from them.

Our social life has picked up quite a bit also. Water skiing parties were the favorite and have been fun for all. Second in choice



THETA. Ned Clark, Roger Taylor, and Bob Meyer heave-to at a Theta chapter work party.

were our several exchanges with different sororities.

This quarter also saw a major overhaul of our Bylaws. The revision committee has been working hard to bring them up to date and to get them more along the national lines. One notable change was the breaking up of the one-year term for chapter offices into two terms per year. We feel this will help keep the more enthusiastic members at the "helm" where they can do the most good.

Officers for the first half of

next year are Andy LeCocq, president; Jim Woodman, vice-president; Mike Bridgham, corresponding secretary; Bob Meyer, recording secretary; Al Campbell, steward, and George Peabody, house manager.

Plans are being laid presently for next fall and the future. We have a much brighter outlook than we probably ever had. We pray that we can realize our aspirations and make Theta one of the leaders on the Washington campus.

—Jim Woodman

Iota

KANSAS STATE

The big news at Iota is that we have occupied our new house. After only two years of planning and building we were able to move into our 60-man, \$225,000 home during the first week in March. Complete new furnishings for the house have been purchased, and they will arrive this summer.

Because of the increased size of the new house, Iota has been concentrating on its rush program this past year. Since the end of rush week last fall, we have pledged 15 men, the most of any fraternity at Kansas State. The intensity of the rush program will increase during the summer in our drive to fill the house with good men.

The first activity of the spring semester was the Founder's Day celebration held in Kansas City on March 17 and 18. This was fol-

lowed by the first major social function held in the new house, our annual Mardi Gras costume party. The recreation room was decorated to resemble a New Orleans night club. Initiation was held the next week end, with 11 men becoming brothers on April 7. The spring formal, the Golden Yellow Pernet Rose Ball, was held at the house on May 3. Numerous exchange dinners and hour dances were also held.

As the school year drew to a close, Barry Rupard was installed as president to lead Iota through the summer and the first semester of next year. Assisting him will be Penn Morton, vice-president; Larry French, treasurer; Norman Hostetler, corresponding secretary, and Richard Steudtner, house manager.

Lambda

EMPORIA STATE, KANSAS

This has been a great year for AKL at Emporia State, with the chapter continuing its position of leadership in many phases of student life.

For the third straight year, Alpha Kappa Lambda won the campus "Singing Bee," and this was accomplished even though the chapter had no music majors in its ranks who could assist.

And for the second straight year,

the chapter won the campus scholarship trophy. It was the award for the 1955-56 school year.

One accomplishment of which we are proud is our annual variety show. This is a program of separate acts, which the chapter stages each year in behalf of a benefit or charity. This year the program was given at Olpe, Kansas, to raise money for its summer recreation program.

LAMBDA. As part of "Help Week," these Lambda pledges plant shrubbery at the Emporia Community Center.



Socially, the chapter was active, with two major parties being staged during the spring semester. These were the annual "Go to Hell" party and the pledge formal.

Officers of the chapter are John Mohler, president; Ray Martz, vice-president; Darrel Murray, recording secretary; David Allison, corresponding secretary; and Larry Shepherd, treasurer.

—David Allison

Mu

OHIO STATE

By far the most important thing that has happened to Mu Chapter in the last year was the acquisition of a new house, which we moved into, fall quarter. The house has a capacity of 28 men, and although there are only 20 living in it now, we hope to have it filled by next fall.

The big social events of the year were the shipwreck party, the Formal, and the week end when girls stayed in the house.

The Shipwreck Party was held in the house with couples wearing tattered clothes symbolic of being shipwrecked. Barry Pfouts won the trophy for the funniest costume.

The Formal was a dinner-and-dance combination and was held at the Deshler Hilton Hotel. Annette Nelson, Billy Smith's pin mate, was elected Sweetheart of AKL for Mu Chapter.

On May 11, at 12 noon, all the

men moved out of the house and their dates moved in. After all the girls were settled, everyone adjourned to Darilee Park for a picnic. The next day, Sunday, the brothers cooked breakfast for the girls and then everyone went to church in a group before the girls moved out and the guys all moved back into the house.

For the most part the men of Mu did not do too well in athletic competition. However, the one bright spot was the bowling team, which went to the quarter finals during winter quarter.

Two carloads of men went to Penn State to aid in the initiation of Sigma Phi Alpha local into National Alpha Kappa Lambda. Also, we won the trophy in the Midwest Roundup of AKL where Gamma, Rho, Mu and Kappa chapters were represented.

—Tom Graybill

Omicron

COLLEGE OF THE PACIFIC

The men of Omicron Chapter have enjoyed a very fine semester this spring. Eight new members have been initiated into membership, bringing the total to 20 new AKL's for the school year, and the total membership to 34.

Socially and academically we

did very well. We finished a strong second among living group participation in the annual "Band Frolic Musical." Our skit brought calypso onto the campus in grand style, and from what we hear they loved it. We played host to the four sororities on our campus with

Spring Initiates

BETA—April 21, 1957

William Corbus, Jr.
Richard Kinser

GAMMA—March 10, 1957

Harold Darrell Blue
William Ross Bohn
John Bell Clark
David Isham Dow
George Franklin Goodall
Gerry Allen Graham
James Robert Hettick
Max Lloyd Knierim
Douglas Martin Lapp
Ray Jean Pensinger
Thomas Macklin Reeder
Richard Allen Schwarlose

DELTA—February 17, 1957

Richard C. Haines
Orley Leon Lake
J. Vincent Meyer
Carl E. Reiner
Darrel C. Steeby
Eugene W. Thomas
Jorgen B. Anderson (Honorary)

ETA—March 3, 1957

Charles Keith Johnson
William F. Reese
Wendell Laverne Love
Neal B. Brown

THETA—February 10, 1957

James Nelson Woodman
George William Peabody
Albert Charles Campbell

IOTA—April 7, 1957

Thomas Henry Cour
Donald Martin Ernst
Edward Allen Frankel
Norman Henry Hostetler
Henry Harold Hyndman, Jr.
Robert Kay Kiser
Gary John Lazarus
Bill Dean Molohan
Barry Norman Rupard
Richard Raymond Steudtner
Gary Elbert Williams

KAPPA—February 17, 1957

Stanley Joseph Chmielowiec
Robert Edmund Pursley
James Claude Harbour
William David Jeffrey
Willis Henry Yeomans, Jr.
Russell James Johnston

LAMBDA—February 3, 1957

John Treece Staton
Darrel Lee Murray
Kelvin Dwight Casebeer
Billy Ray Harris
James Joseph Downey
David Edward Allison, Jr.

MU—February 3, 1957

Joel Lee Crandall
Walter Wixowski
Peter Luke
Don Phillip Carlton

—April 27, 1957

XI—January 20, 1957

Emile Hilaf (Honorary)
Robert B. Davis (Honorary)
James Francis Hood (Honorary)
Richard E. St. Clair (Honorary)

PI—February 10, 1957

Terry Lee Black
Clifford Harris Cox
Robert Allen Golchert
David Francis Myrick

RHO—March 24, 1957

Charles H. Baird
James Brackney
Galen L. Brant
Lewis Crane
Thomas R. Drury
Larry W. Eveland
Gerald Ray Haxton
Andy R. Jackson
David G. Lee
Noel Lee Montgomery
Larry Pattison
Harold Pinther
T. Kent Smith
Calvin L. Stockman
F. Dwight Storm
Howard L. Unterbrink
John K. Van Voorhis
Anthony T. Soares (Honorary)
Rex Syndergaard (Honorary)

SIGMA—April 7, 1957

Kenneth H. Bauer
Allan W. Biesemeyer
Howard Leslie Bourdless
Carl Richard Brown
Kevin Lewis Brownfield
Robert Wherley Browning
Arlan Richard Bullock
David S. Campbell
John W. Chronister
Lloyd Norman Cowherd
Martin Edward Dye
Donald Eugene Elliot
Robert Gordon Garrigues
William E. Hammond
Jesse R. Harrison
Herbert Dale Hoepfner
Eldon A. Kimball
Kent Verlon Nance
David Johnson Payton
George W. Ryle, Jr.
William E. Sparling
Raymond Lee Wahrenbrack
Keith L. Doss (Honorary)
H. Clay Jent (Honorary)
Kenneth F. Markwell (Honorary)

—May 15, 1957

Thomas R. Adams
Webber D. Meredith
Don Edward McKinley
Claude Lawson Nichols
Howard Eugene Phillips
Claude Gabriel Roe, Jr.

TAU—April 28, 1957

Thomas F. Albert, '59
David R. Benson, '58
Thomas M. Botlock, '59
James G. Boyles, '59
Fred C. Bunnell (alumnus, '31)
William B. Butt (alumnus, '50)
Edward S. Dubbs, '58
William J. Forbes, '59
Richard M. Frederick, '59
Charles A. Glaser (alumnus, '29)
George H. Horhigh, '59
Watson W. Hibbs (alumnus, '24)
Leslie E. Hoffman, '57
Linwood J. Johnson (alumnus, '25)

Gerald G. Kroninger, '57
Charles T. Kurtz, III, '57
Lawrence W. Linvill (alumnus, '49)
Frank D. Moore, III, '58
Samuel P. Moore, '57
John R. Pickering, Jr.
(alumnus, '35)
H. Atmore Pollock, III, '59
Horace H. Pusey (alumnus, '38)
Wayne K. Radcliffe, '59
John K. Reilly, Jr., '57
George Rhoads (alumnus, '25)
James F. Robson, '59
Robert P. Schuman, '57
Harry G. Sealey (alumnus, '25)
W. John Sier, '58
Eugene E. Snyder, '58
Harold W. Stasch, '59
Roger L. Stuart, '57
Donald B. Sutherland, '59
Carl R. Sword, '58
Robert N. Taylor, '59
William A. Thornquist, '57
Donald C. Tyson (alumnus, '26)
W. Chester Van Gorder
(alumnus, '45)
Robert N. Waterstradt, '59
Harold E. Wiant, '57
Robert M. Worthington
(alumnus, '41)
Martin B. Yarnall (alumnus, '49)
Edgar F. Benner (Honorary)
Luther T. Bissey (Honorary)
Clarence A. Ellsworth (Honorary)

Raymond S. Farwell, Jr.
(Honorary)

Maurice S. Gjesdahl (Honorary)
William L. Kjelgaard (Honorary)
Henry T. Moon (Honorary)

UPSILON—May 12, 1957

Eldon E. Baker
Thomas E. Blackman
Gerald E. Buck
James C. Chatelain
James R. Chavez
Jacques L. Condor
Paul C. Cox
Walter E. Davies
Albert P. Eaton
James M. Edmondson
Leo F. Englert
Larry L. Facine
Donald G. Fox
Patrick L. Harris
Robert J. Kurelich
Paul J. Lahr
Pete A. Marta
George T. Matteson
A. Charles Montgomery
Lloyd A. Norton
B. William Olson
Robert A. Pier
Ronald E. Pope
Alan E. Simermeyer
Ervin E. Spohr
Arvard O. Vogel
Darryl B. Yorke
Harold Anderson (Honorary)

exchanges highlighted by refreshments, entertainment by the pledges, and volleyball.

Beta Chapter invited us down for an outing on the ocean beach near San Francisco. Our annual "Prohibition Prowl Dance" turned the calendar back 30 years, and we let loose with the "Roaring Twenties." And a mountain lake retreat climaxed our social activities for the semester, with a picnic, water skiing and softball.

Academically, we again finished first among men's living groups on campus and third nationally

within AKL ranks.

In sports, we were first in intramural track, third in swimming, and active also in volleyball and baseball.

Omicron is in process now of negotiating for the purchase of our home here on West Fulton. At present, the house is leased to us. The house is being repainted and will be remodeled shortly.

Our graduation loss was very small, so we are looking forward to another top year.

—Howard Johnson

Pe

MILLIKIN

This summer's vacation was one the Pi guys really felt they needed and deserved. The spring semester was an eventful one at Millikin University.

In February we held formal initiation for four neophytes, we had two serenades and two exchanges, and we had an "off to serve your country" party for Dick Gilmour, '56.

In March, we and the Tri-Delts got together and put on an act in the school variety show. We had two exchanges and a house dance. The theme was "Between Heaven and Hell with AKL." The clever decorations and novel bids were created by our student artist, Terry Black.

On March 24, we, Gamma, and Kappa chapters ran the charter of

Rho chapter to Charleston, Ill. Some of our fellows managed to get down there the night before the installation to attend the mixer held by the sororities on campus.

In April our pledges had a dance for the active chapter in the basement. We all had fun at "Moonlight and Roses."

For Sigma chapter's installation on April 7, at Warrensburg, Missouri, six of our men drove the way to attend it and the reception afterwards. When Tau chapter was installed on April 26, five of us were there. We drove over 1600 miles round trip to initiate the new brothers and attend the installation. There were never five guys who had a better time in one week end. The state of Pennsylvania, quite different from flat Illinois, gave us "cowboys" a real thrill to see. The Tau men were

really swell to us. Thanks again Tau, for a fabulous time.

In May, we entered the Greek sing under the direction of Bob Krebs. Our parents' club met in the same month. On May 10, we had our spring formal. "Spring Stardust" fell all over the place as we announced our AKL Sweetheart to be Winnie Ellwood. Winnie is engaged to Mer Rusch.

The one serenade we had in May was for Sandy Stewart, pinned to Terry Black. Dick Goldstein and Mitzi Abner are now married. Five more of our Pi guys were married during the summer months.

As all semesters do, the spring semester too came to a close. A round of song completed another great four months for Pi chapter of Alpha Kappa Lambda.

—Bob Golchert

Rho

EASTERN ILLINOIS STATE

Rho chapter of Alpha Kappa Lambda began last September under the leadership of Gary Haxton, in a library seminar room. However, official recognition as a campus organization did not come until November 5, when the director of student activities acted to give us official status.

Rho has had a busy year, even in addition to the procedure of organization. One Saturday early in October, all members helped in raking and cleaning the yards of the sorority houses. On December 20, the colony had a caroling party with the Sigma Kappa sorority. This was followed by helping with the Christmas Party for underprivileged children at Douglas Hall.

The colony entered both winter and spring intramural sports. Howard Unterbrink was our candidate in the Alpha Phi Omega "Ugly Man Contest" which terminated with an all-school dance. The Winter Smoker for prospec-

tive pledges was well attended and seemed to stimulate much campus interest. Coke hours were held with the Delta Zeta and Sigma Kappa sororities.

The week end of March 23-24 was the installation of Rho chapter. It was well attended, as was the reception which followed. The week after the installation was Greek Week on campus. Rho chapter participated in the Greek Dinner, Formal, and Sing. Although the Sing was not competitive, our small group received many compliments.

The first week in May, the chapter held a hamburger fry at Fox Ridge State Park. We also attended Tri-State Day held at Gamma, but hope to have a much larger delegation next year. The last week of the school year a farewell party was held for Gary Haxton, who returns to Lambda chapter next year.

—Noel Lee Montgomery

Sigma

CENTRAL MISSOURI STATE

Spring quarter was a hectic one for Sigma chapter, especially with our installation and initiation added to the already heavy schedule.

Our installation dance this year took the place of a regular formal. Music was provided by the Naturals jazz quintet and entertainment was provided by local talent. Dates were secured for about fifteen enthusiastic brothers from other chapters who came for the installation.

The first major campus event was a spring rush. We emerged with the second largest of the five pledge classes recruited on campus, pledging eight men.

Our candidate for president of the Student Government Association missed getting vice-president by fifty votes, but we will be represented on the executive council by Bob Browning, who will be special activities chairman.

Our teams in basketball and softball managed to go through the season without a win, although several games were quite close. In the All-Greek Song Fete, our selection, The Halls of Ivey, got us second place on a split decision. We encountered pitch difficulties,



Sigma brothers enjoy a pinning ceremony.

but had fun and gained valuable experience.

At our senior banquet May 7 we said goodbye to four graduating seniors, Lloyd Cowherd, Bill Hammond, Bill Sparling, and Ray Wahrenbrock.

The chapter's scholastic average of 2.599 (out of 4.00) placed us second on campus, out of five fraternities.

Pinnings are picking up, with three brothers entering the candlelit heart. They are Howard Bourdess, pinned to Katy Loman; Dave Payton to Lola Haber, and Ray Wahrenbrock to Grace Clark. Lawson Nichols is engaged to Marilyn Denney.

—Carl Brown

Tau

PENNSYLVANIA STATE

New officers of Tau of Alpha Kappa Lambda are James Boyles, president; Richard Frederick, vice-president; James Robson, secretary; Carl Sword, treasurer, and H. Attmore Pollock, corresponding secretary.

Eight seniors graduated in June and entered different fields and professions. Those graduating were: Leslie Hoffman, physics; Samuel Moore, poultry husbandry; John Reilly, pre-law; William A. Thornquist, hotel administration; Charles Kurtz and Harold Wiant, business administration; Robert Schuman, Gerald Kroninger and Roger Stuart, engineering.

Les Hoffman married the former Shirley Stewart of Williamsport and the couple are now living in Pittsburg where Les is attending graduate school at the University of Pittsburg. Gerald Kroninger was married June 15 and he and his wife, the former Joan Priebe, are now living in Detroit where he is a graduate student at the Chrysler School of Engineering.

New pledges at Tau are: Paul Loubris, aero eng.; Curtis Waters, mechanical engineering; Bob Gallagher, mining engineering; Bill Ginnado, secondary education; Art Ballman, business administration; Ross Farber, mechanical engineer-

ing, and Jim Pecora, business administration. The prospects for a successful fall pledging program are very high. Former rushing chairman James Robson spent much time in choosing the fine pledges that Tau will have the good fortune of having next fall semester.

Tau has only been a chapter of AKL for a few months but everything is running very smoothly.

Upsilon

COLORADO STATE

Many accomplishments have been made in the short time of one year since the Los Amigos Club was granted a charter on the Colorado State College campus as a colony of Alpha Kappa Lambda Fraternity.

This group of energetic men began to show their ability when they were permitted to enter the intramural program and the All-Greek Songfest last Spring Quarter. They made an excellent showing, but were not considered in the competition, because of probationary status under which they were placed.

Spring Quarter ended and Fall Quarter began, finding the same hustling group of individuals making an outstanding showing on the Colorado State Campus. They made a clean sweep of homecoming decorations, but due to a misunderstanding concerning the use of Greek letters, they became disqualified in the float division. They did however place a trophy on the mantle for house decorations. The group added five men to their roster and had a total of twenty men.

Winter Quarter found the group with a pledge class of twelve men

Our Senior Ball week end was a big success as well as our Mothers' Day program. The graduating seniors were honored at a banquet just before final exams. We at Penn State are looking forward to a very prosperous fall semester as new members of Alpha Kappa Lambda. Next year at this time we hope that we shall be well established in our great fraternity.

—H. Attmore Pollock

and two more trophies for the mantle. These came for sponsoring the queen of the Air Force R.O.T.C. Ball, and a first place in Forensic Follies.

Spring Quarter started with a bang as the group embarked upon the greatest community service project to hit the state of Colorado. They became affiliated with the Boy Scouts of America in the role of tutors for the boys to make merit badges and advancements. The program proved successful and will be continued as a special project of the organization in the future.

Time then came when the year's probation was up, and the group petitioned National Alpha Kappa Lambda Fraternity for a charter grant. They were given a vote of approval by the Inter-Fraternity Council and the Associated Students of Colorado State. The date was then set for the National Installation of Upsilon chapter, May 11 and 12. Receipt of the charter proved to be the climax and supreme accomplishment of a successful year for the 29 charter members and 6 pledges of Upsilon chapter.

—Pete Marta

AKL Club

OREGON STATE

Word was received last term from Lewis Bacon's office that AKL Club's petition to go national was unanimously approved by the

member chapters of Alpha Kappa Lambda. The installation, previously slated for this spring has been postponed until next fall,

October 26-27, when we will become Phi chapter.

The Oregon Alumni Association of Alpha Kappa Lambda has placed a down payment on a house in Corvallis for the AKL Club. The house is currently tied up for one year by a lease between the former owner and the group now living in the house. The house will be ready in the fall of 1958, and

the Club may move into a nearly furnished house.

The AKL Club participated in intramural athletics this year, but it just couldn't seem to win a trophy. AKL played in the finals of volleyball, basketball, football, and baseball, but the last game seemed to be a wall every time. Next year we hope to scale that wall and win some trophies.

NEWS of the Alumni Chapters

Chicago

The annual Chicago AKL Alumni chapter banquet was held on Friday, April 26, at Nielsen's Restaurant in Elmwood Park. It was a smorgasbord dinner at 7:30 p.m., and was preceded by a social hour.

Dr. George H. Mayer, Purdue Honorary, spoke on his world travels. He is professor of history at Purdue University, and was exchange professor in India, then took a world tour before returning to this country.

Los Angeles

The Los Angeles Alumni Chapter held its spring meeting at the Redwood House, in the Los Angeles Civic Center, on Tuesday April 30, 1957. A goodly number of Brothers turned out for the event, arranged by President Harvey Wannamaker and Secretary Doug House. The program featured an excellent film of the Los Angeles Rams 1956 season. New officers elected for the 1957-1958 season were: President, David Chase, Alpha '29; Vice President, Al Post, Beta '27; Secretary, Doug House, Alpha '44.

Gordon Jones, Alpha '47, was elected to the Board of Trustees of the Logos Foundation, replacing Fred Clapp, whose term expired.

All alumni in the Los Angeles area who are not on the mailing

list are urged to communicate with Secretary Doug House, so that they may be advised of future meetings.

Philadelphia

The Alpha Kappa Lambda-Sigma Phi Alpha summer picnic was held at Linvilla Orchards near Philadelphia, at 2:00 p.m., Saturday, July 27. Swimming was the feature of the day and a picnic lunch provided the food.

The event was the first held since Sigma Phi Alpha's undergraduate chapter at Pennsylvania State University became Tau chapter of AKL on April 28. All AKL's and SPA's in the area were invited.

Wichita

On July 28, the Wichita AKL Alumni chapter held its annual summer picnic at Fairmount Park. As usual, a large group of AKL's, wives, sweethearts, friends, and rushees were in attendance. The three Kansas AKL chapters were well represented by active members, and each held a rush function in conjunction with the alumni gathering.

Rev. Forrest Reynolds, alumni president, presided at the meeting. Lewis Bacon, AKL's executive secretary, spoke on the fraternity's expansion program and other national developments.

DIRECTORY

ALPHA KAPPA LAMBDA FRATERNITY
National Office: Box 132, EMPORIA, KANSAS
Founded at the University of California
on April 22, 1914.

EXECUTIVE SECRETARY—Lewis J. Bacon, 610 Arundel, Emporia, Kansas

PAST NATIONAL PRESIDENTS

1921-22 *William B. Herms, A'Hon.	1936-38 Irving Dilliard, G'27
1922-23 Harrison A. Dobbs, A'16	1938-39 Edwin A. Wadsworth, A'32
1923-25 Howard T. Beaver, Ep'23	1939-41 Harry H. Hollis, K'35
1925-27 Lewis C. Reimann, Z'Hon.	1941-45 Joseph Cullen Blair, G'Hon.
1927-30 Frederick J. Moreau, Ep'22	1945-47 Joseph B. Rogers, E'37
1930-33 Frank A. Waring, A'24	1947-51 H. George DeKay, K'Hon.
1933-36 James H. Spencer, Z'31	*Deceased

NATIONAL EXECUTIVE COUNCIL

National President, Dr. Ted F. Andrews, Biology Department, State Teachers College, Emporia, Kansas
National Vice-President and Chaplain, Dr. Rixford K. Snyder, 506 Governor's Lane, Stanford University, California
National Treasurer, David M. Allen, 501 Greer Road, Palo Alto, California
National Editor, Robert L. Davis, 709 Schweiter Bldg., Wichita 2, Kansas

NATIONAL ENDOWMENT FUND BOARD

David M. Allen, *Chairman*, 501 Greer Road, Palo Alto, California
 Dr. H. George DeKay, 715 Meridian Street, West Lafayette, Indiana
 Howard F. Engelbrecht, Oregon, Illinois
 Warren P. Lyttle, 517 N. Dellrose, Wichita, Kansas
 Allen R. Carpenter, Jr., 2102 Shoshone Trail North, Cody, Wyoming

THE LOGOS FOUNDATION BOARD

Robert C. Robertson, *President and Treasurer*, P.O. Box 218, Glendale, Calif.
 Frank B. Lenz
 Gordon R. Jones
 Lloyd G. Hall
 Lewis J. Bacon

COLLEGIATE CHAPTERS

Alpha	UNIVERSITY OF CALIFORNIA
2701 Hearst Avenue, Berkeley 9, California	
Chapter President	FRANK A. STEVENSON
President, Board of Trustees	Lee Johnson
Beta	STANFORD UNIVERSITY
Box 1333, Stanford, California	
Chapter President	JAMES SHEEHAN
President, Board of Trustees	Carroll Bradberry
Gamma	UNIVERSITY OF ILLINOIS
401 East Daniel St., Champaign, Illinois	
Chapter President	JON GUYTON
President, Board of Trustees	James McDonald
Delta	UNIVERSITY OF KANSAS
1144 Louisiana Street, Lawrence, Kansas	
Chapter President	WARREN GAY
President, Board of Trustees	Howard Stettler
Eta	WASHINGTON STATE COLLEGE
1718 A Street, Pullman, Washington	
Chapter President	HAL TYE
President, Board of Trustees	Charles Barker

Theta	UNIVERSITY OF WASHINGTON
1804 East 50th Street, Seattle 5, Wash.	
Chapter President	ANDREW D. LeCOCQ
President, Board of Trustees	Gustav Blesner
Iota	KANSAS STATE COLLEGE
1919 Hunting Avenue, Manhattan, Kansas	
Chapter President	BARRY N. RUPARD
President, Board of Trustees	Clarence L. Brehm
Kappa	PURDUE UNIVERSITY
Box 585, West Lafayette, Indiana	
Chapter President	DAVID L. ATKINS
President, Board of Trustees	Warren Dalbke
Lambda	KANSAS STATE TEACHERS COLLEGE
1802 Merchant, Emporia, Kansas	
Chapter President	JOHN H. MOHLER
President, Board of Trustees	Edwin L. Stuntzner
Mu	OHIO STATE UNIVERSITY
220 East 14th, Columbus, Ohio	
Chapter President	DONALD COLEGROVE
President, Board of Trustees	Ronald Tietz
Xi	NORTHEAST MISSOURI STATE TEACHERS COLLEGE
711 South Florence, Kirksville, Missouri	
Chapter President	ROBERT L. WISEMAN
President, Board of Trustees	Charles Seward
Omicron	COLLEGE OF THE PACIFIC
212 W. Fulton Ave., Stockton, California	
Chapter President	MARVIN TAYLOR
President, Board of Trustees	J. Marc Jantzen
Pi	MILLIKIN UNIVERSITY
386 N. Oakland, Decatur, Illinois	
Chapter President	EDWIN A. WILSON
President, Board of Trustees	Robert McCreary
Rho	EASTERN ILLINOIS STATE COLLEGE
1410 Seventh St., Charleston, Illinois	
Chapter President	F. DWIGHT STORM
President, Board of Trustees	Wilfred S. Myers
Sigma	CENTRAL MISSOURI STATE COLLEGE
406 South Holden, Warrensburg, Missouri	
Chapter President	GEORGE W. RYLE, JR.
Tau	PENNSYLVANIA STATE UNIVERSITY
134 East Foster Ave., State College, Pa.	
Chapter President	JAMES G. BOYLES
President, Board of Trustees	Horace Pusey
Upsilon	COLORADO STATE COLLEGE
1708 8th Avenue, Greeley, Colorado	
Chapter President	PETE MARTA

COLONIES

AKL Club	OREGON STATE COLLEGE
811 Monroe, OSC, Corvallis, Oregon	
Club President	RON JOHNSON

ALUMNI CHAPTERS

CENTRAL ILLINOIS—President, NATHAN ELLIFF, 915 Washington, Pekin, Illinois; Secretary, Robert Clevenger, corner Capital and Court, Pekin, Illinois.
 CHICAGO—President, WILLIAM SHUEY, 220 Waubunsee, Riverside, Ill.; Secretary, Donn Trautman, 5110 West Irving, Chicago, Ill.
 DETROIT—President, H. SANBORN BROWN, 4895 Grand River Ave., Detroit 8, Mich.; Secretary, C. W. Zink, 6587 Epworth Blvd., Detroit 10, Michigan.
 EAST BAY—President, ROBERT WYCKOFF, 1708 Euclid Ave., Berkeley, California.
 EMPORIA—President, DR. FRED F. McCABE, 615½ Commercial, Emporia, Kan.;
 INDIANAPOLIS—Chairman, DONALD MORRISON, 1825 E. Bradbury, Indianapolis, Ind.
 KANSAS CITY—President, JAMES R. SHIELDS, 323 Brush Creek, Kansas City, Mo.
 LOS ANGELES—President, DAVID CHASE, 453 S. Spring St., Los Angeles, Calif.; Vice-Pres., Alfred B. Post, 2010 Lorain Road, San Marino, Calif.; Secretary, Douglas M. House, 6724 Elmer St., Apt. 3, North Hollywood, Calif.
 MADISON—President, HAROLD LAUTZ, 4 Roby Road, Madison, Wisc.; Secretary, Arthur Raffill, 2630 Chamberlain, Madison, Wisc.
 NEW YORK—President, FRANK LENZ, 6 Beach Terrace, Yonkers, N.Y.; Vice-president, Dr. Norman Plumer, 140 West St., New York City, N.Y.; Secretary, Harold C. Mesch, 59 Vernon Terrace, East Orange, New Jersey.
 PORTLAND—Secretary, HUGH A. SCOTT, 7705 S.E. Reedway, Portland, Oregon.

SACRAMENTO—Secretary, JOHN MATTHEWS, 1550 Twelfth Ave., Sacramento, Calif.
 ST. LOUIS—Secretary, GEORGE B. ROGERS, 5963 Plymouth Ave., St. Louis 12, Mo.
 SAN FRANCISCO—Secretary, DWIGHT V. STRONG, 58 Sutter St., San Francisco, Calif.
 SEATTLE—President, DR. WILBERT B. SAUNDERS, 1408 N. 48th, Seattle, Washington.
 SPOKANE—President, HARRY DENNY, 15 W. 34th St., Spokane, Wash.
 WICHITA—President, REV. FORREST J. REYNOLDS, 126 N. Meridian, Wichita, Kan.; Vice-Pres., Wm. P. Cosgrove, 1505 S. Old Manor, Wichita, Kan.; Secretary, Wayne Stockebrand, 4019 Regents Lane, Wichita, Kan.
 YAKIMA—President, WILLIAM J. ANDRING, 912 Rose Place, Yakima, Wash.; Secretary, Lloyd Porter, 526 Miller Bldg., Yakima, Wash.

the last word . . .

As a national organization, Alpha Kappa Lambda has taken many concrete steps toward improving its rank and position among fraternities. We have added several good chapters; we have adopted a fraternity-wide program for community service; we have developed a scholarship program through The Logos Foundation; we have enlarged the scope of services to the chapters and to the alumni. But the thing we would like most to achieve, and which would mark our consequence among fraternities, is for each of our collegiate chapters to rank high on its particular campus in scholarship, in financial stability, in a balanced social program, and in adherence to the fraternity's ideals.

I suppose that every fraternity chapter longs for new or better housing. Oftentimes the collegiate members express the opinion that if only they could have a new house, all problems would be resolved and the chapter would be "tops on campus." Yet a new house may in fact prove a detriment to the spirit of brotherhood and the group's "esprit de corps." Suppose, for instance, that because of enlarged social demands, some of the members cease to pay their

housebills fully and promptly, thus forcing the more reliable brothers to carry the full load. No, fine houses do not make a fraternity.

Scholarship is a virtue that should be stressed by a college fraternity, and courtesy and social grace are evidences of good breeding and should be the mark of a fraternity man. It is proper that the well-intentioned fraternity should seek improvement in these areas, yet all efforts will fail if several of the members reject discipline and refuse to give the upgrading programs enthusiastic support.

If the atmosphere and discipline of a collegiate chapter help mold rough and imperfect freshmen into upright, polished seniors, a chapter is bound to be outstanding. Such an atmosphere can be achieved and the discipline enforced when the chapter membership has the maturity and understanding to support and encourage the efforts to upgrade.

Men make a fraternity—not houses, wealth, or social position. When a collegiate chapter seeks to improve itself, to upgrade, the members themselves must support the efforts and must submit to the necessary disciplines.

So, too, when National Alpha Kappa Lambda seeks to improve its rank and position among fraternities, no mere resolution adopted by the officers is sufficient. Rather, it takes action and endorsement by the entire membership to put across all new programs and policies.

Alumni members have a role to play! For instance, alumni members should continue to give guidance to, and exercise a healthy control over, the collegiate chapters. Alumni members should give generously to support the scholarship program. Alumni members should be distinguished by their support of college programs which encourage the worthwhile aspects of student life. And their adult lives and actions should reflect the

influence of a fine fraternity relationship.

Let us have your ideas and suggestions, your approval or disapproval, your encouragement, your financial aid. Best of all, let us have your participation.

To make that participation possible, Alpha Kappa Lambda will hold its 1958 Conclave at the Hotel Stanley at Estes Park, in the heart of colorful Colorado, and at the entrance to Rocky Mountain National Park. We believe that with these fine facilities, as well as the outstanding planned entertainment offered by the resort hotel, many alumni will want to attend. Plan your vacation so that you can be there—Estes Park, Colorado, August 31 to September 1, 1958.

Robert L. Davis, Editor

Attention AKA Members

ORDER YOUR OFFICIAL INSIGNIA
 DIRECT FROM THIS BURR-PATT AD!

Regulation Badge—Crown Set Whole Genuine	
Oriental Pearls—Yellow Gold	\$14.50
Sister Pin, Crown Set Pearl, White Gold	10.00
Sister Pin, Crown Set Pearl, White Gold	10.00
Pledge Button	1.00

10% Federal excise tax must be added to the above prices; also state sales or use taxes where they are in effect

Where official releases are required, we will secure them for you from your National Chapter, in accordance with the regulations of your Fraternity.

Send For Your Free Personal Copy of

"The Gift Parade"

Furnished Exclusively by

BURR, PATTERSON AND AULD CO.

2301 Sixteenth Street

Detroit 16, Michigan

America's Oldest Fraternity Jewelers

The Logos of Alpha Kappa Lambda
Office of the Secretary, Lewis J. Bacon
Box 132
Emporia, Kansas

Non-Profit
Organization
U. S. Postage
P A I D
Emporia, Kansas
Permit No. 124

Form 3547 requested. Forwarding and
return postage guaranteed.

TWO CHAPTERS

of the four new installations reported in this issue were

DIRECT RESULTS

of contributions to

THE LOGOS FOUNDATION

For Additional Expansion

GIVE NOW!!

SEND CONTRIBUTIONS (TAX DEDUCTIBLE) TO:

The Logos Foundation
P. O. Box 218
Glendale, California